

Product datasheet for PH319578

EEF1G (NM_001404) Human Mass Spec Standard

Product data:

Product Type:	Mass Spec Standards
Description:	EEF1G MS Standard C13 and N15-labeled recombinant protein (NP_001395)
Species:	Human
Expression Host:	HEK293
Expression cDNA Clone or AA Sequence:	RC219578
Predicted MW:	49.9 kDa
Protein Sequence:	>RC219578 representing NM_001404 Red=Cloning site Green=Tags(s)

MAAGTLTYYPENWRAFKALIAAQYSGAQRVLSAPPHFHGQTNRTPEFLRKFPAGKVPAFEGDDGFCVF
ESNAIAYVVSNEELRGSTPEAAAQVVQWVSFADSDIVPPASTWVFPPTLGMHNNKQATENAKKEEVRRILG
LLDAYLKTRTFLVGERVTLADITVVCTLLWLKQVLEPSFRQAFPNTNRWFLTCINQPQFRAVLGEVKLC
EKMAQFDAKKFAETQPKKDTPRKEKGSREEKQKPAERKEEKAAAPAPEEEMDECEQALAAEPKAKDPF
AHLPKSTFVLDEFKRKYSNEDTLSVALPYWEHFDKDGWLSWYSEYRFPPEELTQTFMCSNLTGMFQRLD
KLRKNAFASVILFGTNNSSISGVWVFRGQELAFPLSPDWQVDYESTWRKLDPGSEETQTLVREYFSWE
GAFQHVKGAFNQKIFK

TRTRPLEQKLISEEDLAANDILDYKDDDDKV

Tag:	C-Myc/DDK
Purity:	> 80% as determined by SDS-PAGE and Coomassie blue staining
Concentration:	>0.05 µg/µL as determined by microplate BCA method
Labeling Method:	Labeled with [U- ¹³ C ₆ , ¹⁵ N ₄]-L-Arginine and [U- ¹³ C ₆ , ¹⁵ N ₂]-L-Lysine
Buffer:	25 mM Tris-HCl, 100 mM glycine, pH 7.3
Storage:	Store at -80°C. Avoid repeated freeze-thaw cycles.
Stability:	Stable for 3 months from receipt of products under proper storage and handling conditions.
RefSeq:	<u>NP_001395</u>
RefSeq Size:	1429
RefSeq ORF:	1311
Synonyms:	EF1G; GIG35



[View online »](#)

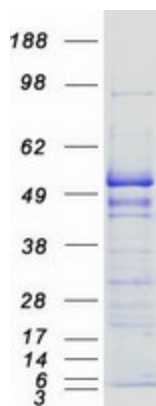
Locus ID: 1937

UniProt ID: [P26641](#), [Q53YD7](#)

Cytogenetics: 11q12.3

Summary: This gene encodes a subunit of the elongation factor-1 complex, which is responsible for the enzymatic delivery of aminoacyl tRNAs to the ribosome. This subunit contains an N-terminal glutathione transferase domain, which may be involved in regulating the assembly of multisubunit complexes containing this elongation factor and aminoacyl-tRNA synthetases. [provided by RefSeq, Jul 2008]

Product images:



Coomassie blue staining of purified EEF1G protein (Cat# [TP319578]). The protein was produced from HEK293T cells transfected with EEF1G cDNA clone (Cat# [RC219578]) using MegaTran 2.0 (Cat# [TT210002]).