

## Product datasheet for PH319574

### Pepsin (PGA4) (NM\_001079808) Human Mass Spec Standard

#### Product data:

Product Type:	Mass Spec Standards
Description:	PGA4 MS Standard C13 and N15-labeled recombinant protein (NP_001073276)
Species:	Human
Expression Host:	HEK293
Expression cDNA Clone or AA Sequence:	RC219574
Predicted MW:	42 kDa
Protein Sequence:	>RC219574 protein sequence Red=Cloning site Green=Tags(s)
	MKWL L L L L G L V A L S E C I M Y K V P L I R K K S L R R T L S E R G L L K D F L K K H N L N P A R K Y F P Q W E A P T L V D E Q P L E N Y L D M E Y F G T I G I G T P A Q D F T V V F D T G S S N L W P S V Y C S S L A C T N H N R F N P E D S S T Y Q S T S E T V S I T Y G T G S M T G I L G Y D T V Q V G G I S D T N Q I F G L S E T E P G S F L Y Y A P F D G I L G L A Y P S I S S S G A T P V F D N I W N Q G L V S Q D L F S V Y L S A D D K S G S V V I F G G I D S S Y Y T G S L N W V P V T V E G Y W Q I T V D S I T M N G E T I A C A E G C Q A I V D T G T S L L T G P T S P I A N I Q S D I G A S E N S D G M V V S C S A I S S L P D I V F T I N G V Q Y P V P P S A Y I L Q S E G S C I S G F Q G M N V P T E S G E L W I L G D V F I R Q Y F T V F D R A N N Q V G L A P V A
	TRTRPLEQKLI SEEDLAANDILDYKDDDDKV
Tag:	C-Myc/DDK
Purity:	> 80% as determined by SDS-PAGE and Coomassie blue staining
Concentration:	>0.05 µg/µL as determined by microplate BCA method
Labeling Method:	Labeled with [U- <sup>13</sup> C <sub>6</sub> , <sup>15</sup> N <sub>4</sub> ]-L-Arginine and [U- <sup>13</sup> C <sub>6</sub> , <sup>15</sup> N <sub>2</sub> ]-L-Lysine
Buffer:	25 mM Tris-HCl, 100 mM glycine, pH 7.3
Storage:	Store at -80°C. Avoid repeated freeze-thaw cycles.
Stability:	Stable for 3 months from receipt of products under proper storage and handling conditions.
RefSeq:	<u>NP_001073276</u>
RefSeq Size:	1413
RefSeq ORF:	1164
Locus ID:	643847
UniProt ID:	<u>P00790</u> , <u>P0DJD7</u> , <u>A0A1S5UZ02</u> , <u>B7Z719</u>



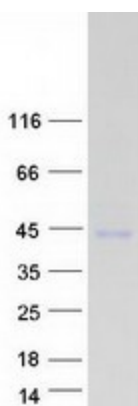
[View online »](#)

**Cytogenetics:** 11q12.2

**Summary:** This gene encodes a protein precursor of the digestive enzyme pepsin, a member of the peptidase A1 family of endopeptidases. The encoded precursor is secreted by gastric chief cells and undergoes autocatalytic cleavage in acidic conditions to form the active enzyme, which functions in the digestion of dietary proteins. This gene is found in a cluster of related genes on chromosome 11, each of which encodes one of multiple pepsinogens. Pepsinogen levels in serum may serve as a biomarker for atrophic gastritis and gastric cancer. [provided by RefSeq, Jul 2015]

**Protein Families:** Druggable Genome

### Product images:



Coomassie blue staining of purified PGA4 protein (Cat# [TP319574]). The protein was produced from HEK293T cells transfected with PGA4 cDNA clone (Cat# [RC219574]) using MegaTran 2.0 (Cat# [TT210002]).