

Product datasheet for PH319559

RBPM2 (NM_194272) Human Mass Spec Standard

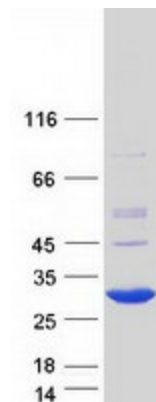
Product data:

Product Type:	Mass Spec Standards
Description:	RBPM2 MS Standard C13 and N15-labeled recombinant protein (NP_919248)
Species:	Human
Expression Host:	HEK293
Expression cDNA Clone or AA Sequence:	RC219559
Predicted MW:	22.3 kDa
Protein Sequence:	<p>>RC219559 representing NM_194272</p> <p>Red=Cloning site Green=Tags(s)</p> <p>MSNLKPDGEHGGSTGTGSGAGSGGALEEEVRTL FVSGLPVDIKPRELYLLFRPFKGYEGSLIKLTARQPV GFVIFDSRAGAEAAKNALNGIRFDPENPQTLRLEFAKANTKMAKSKLMATPNPSNVHPALGAHFIARDPY DLMGAALIPASPEAWAPYPLYTTELTPAISHAAFTYPTATAAAAAALHAQVRWYPSSDTTQQGWKYRQFC</p> <p>TRTRPLEQKLISEEDLAANDILDYKDDDDKV</p>
Tag:	C-Myc/DDK
Purity:	> 80% as determined by SDS-PAGE and Coomassie blue staining
Concentration:	>0.05 µg/µL as determined by microplate BCA method
Labeling Method:	Labeled with [U- ¹³ C ₆ , ¹⁵ N ₄]-L-Arginine and [U- ¹³ C ₆ , ¹⁵ N ₂]-L-Lysine
Buffer:	25 mM Tris-HCl, 100 mM glycine, pH 7.3
Storage:	Store at -80°C. Avoid repeated freeze-thaw cycles.
Stability:	Stable for 3 months from receipt of products under proper storage and handling conditions.
RefSeq:	<u>NP_919248</u>
RefSeq Size:	2019
RefSeq ORF:	627
Locus ID:	348093
UniProt ID:	<u>Q6ZRY4</u>
Cytogenetics:	15q22.31


[View online »](#)

Summary:

The protein encoded by this gene is a member of the RNA recognition motif (RRM)-containing protein family and is involved in the development and dedifferentiation of digestive smooth muscle cells. The encoded protein functions as a homodimer and indirectly inhibits the bone morphogenetic protein pathway. [provided by RefSeq, Aug 2016]

Product images:


Coomassie blue staining of purified RBPM2 protein (Cat# [TP319559]). The protein was produced from HEK293T cells transfected with RBPM2 cDNA clone (Cat# [RC219559]) using MegaTran 2.0 (Cat# [TT210002]).