

Product datasheet for PH319555

LASS6 (CERS6) (NM_203463) Human Mass Spec Standard

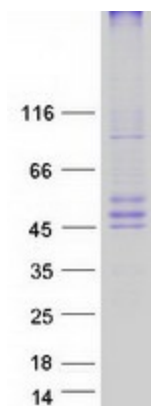
Product data:

Product Type:	Mass Spec Standards
Description:	LASS6 MS Standard C13 and N15-labeled recombinant protein (NP_982288)
Species:	Human
Expression Host:	HEK293
Expression cDNA Clone or AA Sequence:	RC219555
Predicted MW:	44.7 kDa
Protein Sequence:	>RC219555 representing NM_203463 Red=Cloning site Green=Tags(s) MAGILAWFNERFWLPHNVTWADLNKNTTEATFPQAEDLYLAFPLAFCIFMVRLIFERFVAKPCAIALNIQ ANGPQIAPPNAILEKVFTAITKHPDEKRLEGLSKQLDWDVRSIQRWFRQRNQEKPSTLTRFCESMWRFS FYLYVFTYGVRFLLKKTTPWLWNTRHCWYNYPYQPLTTDLHYYYILELSFYWSLMFSQFTDIKRKDFGIMFL HHLVSIIFLITFSYVNNMARVGTLLVCLHDSADALLEAAKMANYAKFQKMCDLLFVMFAVVFITTRLGIFP LWVLNNTLTFESWEIVGPYPSSWWVFNLLLLLQGLNCFWSYLIVKIACKAVSRGKVSKDDRSDISSSDEE DSEPPGKNPHTATTTNGTSGTNGYLLTGSCSMDD TRTRPLEQKLISEEDLAANDILDYKDDDDKV
Tag:	C-Myc/DDK
Purity:	> 80% as determined by SDS-PAGE and Coomassie blue staining
Concentration:	>0.05 µg/µL as determined by microplate BCA method
Labeling Method:	Labeled with [U- ¹³ C ₆ , ¹⁵ N ₄]-L-Arginine and [U- ¹³ C ₆ , ¹⁵ N ₂]-L-Lysine
Buffer:	25 mM Tris-HCl, 100 mM glycine, pH 7.3
Storage:	Store at -80°C. Avoid repeated freeze-thaw cycles.
Stability:	Stable for 3 months from receipt of products under proper storage and handling conditions.
RefSeq:	NP_982288
RefSeq Size:	6259
RefSeq ORF:	1152
Synonyms:	CERS5; LASS6
Locus ID:	253782



[View online »](#)

UniProt ID: [Q6ZMG9](#)
Cytogenetics: 2q24.3
Summary: May be involved in sphingolipid synthesis or its regulation.[UniProtKB/Swiss-Prot Function]
Protein Families: Druggable Genome, Transmembrane

Product images:

Coomassie blue staining of purified CERS6 protein (Cat# [TP319555]). The protein was produced from HEK293T cells transfected with CERS6 cDNA clone (Cat# [RC219555]) using MegaTran 2.0 (Cat# [TT210002]).