

## Product datasheet for PH319552

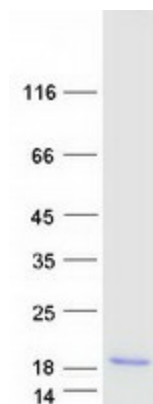
### MCCD1 (NM\_001011700) Human Mass Spec Standard

#### Product data:

Product Type:	Mass Spec Standards
Description:	MCCD1 MS Standard C13 and N15-labeled recombinant protein (NP_001011700)
Species:	Human
Expression Host:	HEK293
Expression cDNA Clone or AA Sequence:	RC219552
Predicted MW:	13.3 kDa
Protein Sequence:	>RC219552 protein sequence Red=Cloning site Green=Tags(s)  MVLPLPWLSRYHFLRLLLPWSLAPQGSHGCCSQPKASMEEQTNSRNGKMTSPPRGPGTHRTEAELARA EELLEQQLELYQALLEGQEGAWEAQALVLKIQKLKEQMRRHQESLGGGA  TRTRPLEQKLISEEDLAANDILDYKDDDDKV
Tag:	C-Myc/DDK
Purity:	> 80% as determined by SDS-PAGE and Coomassie blue staining
Concentration:	>0.05 µg/µL as determined by microplate BCA method
Labeling Method:	Labeled with [U- 13C6, 15N4]-L-Arginine and [U- 13C6, 15N2]-L-Lysine
Buffer:	25 mM Tris-HCl, 100 mM glycine, pH 7.3
Storage:	Store at -80°C. Avoid repeated freeze-thaw cycles.
Stability:	Stable for 3 months from receipt of products under proper storage and handling conditions.
RefSeq:	<a href="#">NP_001011700</a>
RefSeq Size:	709
RefSeq ORF:	357
Locus ID:	401250
UniProt ID:	<a href="#">P59942</a> , <a href="#">A0A1U9X802</a>
Cytogenetics:	6p21.33



[View online »](#)

**Product images:**

Coomassie blue staining of purified MCCD1 protein (Cat# [TP319552]). The protein was produced from HEK293T cells transfected with MCCD1 cDNA clone (Cat# [RC219552]) using MegaTran 2.0 (Cat# [TT210002]).