

Product datasheet for PH319533

ODF3 (NM_053280) Human Mass Spec Standard

Product data:

Product Type:	Mass Spec Standards
Description:	ODF3 MS Standard C13 and N15-labeled recombinant protein (NP_444510)
Species:	Human
Expression Host:	HEK293
Expression cDNA Clone or AA Sequence:	RC219533
Predicted MW:	27.7 kDa
Protein Sequence:	>RC219533 protein sequence Red=Cloning site Green=Tags(s) MTEEVWMTWRPHRPRGPIMALYSSPGPKYLIPPTTGFMKHTPTKLRAPAYSFRGAPMLLAENCSPGPRY NVNPKILRTGKDLGPAYSILGRYQTKTMLTPGPGDYFPEKSTKYVFD SAPSHSISARTKAFRVDSTPGPA AYMLPMVMGPNTVGKASQPSFSIKGRSKLGGFSDDLHKTPGPAAYRQTDVRVTKFKAPQYMAARVEPPG DKTLKPGPGAHSPEKVTLTKPCAPVVTFGIKHSDYMTPLLVDVE TRTRPLEQKLI SEEDLAANDILDYKDDDDKV
Tag:	C-Myc/DDK
Purity:	> 80% as determined by SDS-PAGE and Coomassie blue staining
Concentration:	>0.05 µg/µL as determined by microplate BCA method
Labeling Method:	Labeled with [U- ¹³ C ₆ , ¹⁵ N ₄]-L-Arginine and [U- ¹³ C ₆ , ¹⁵ N ₂]-L-Lysine
Buffer:	25 mM Tris-HCl, 100 mM glycine, pH 7.3
Storage:	Store at -80°C. Avoid repeated freeze-thaw cycles.
Stability:	Stable for 3 months from receipt of products under proper storage and handling conditions.
RefSeq:	NP_444510
RefSeq Size:	1295
RefSeq ORF:	762
Synonyms:	CT135; SHIPPO1; TISP50
Locus ID:	113746
UniProt ID:	Q96PU9

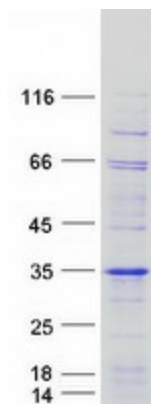


[View online »](#)

Cytogenetics: 11p15.5

Summary: ODF3 is a component of sperm flagella outer dense fibers, which add stiffness, elastic recoil, and protection against shearing forces during sperm movement.[supplied by OMIM, Apr 2004]

Product images:



Coomassie blue staining of purified ODF3 protein (Cat# [TP319533]). The protein was produced from HEK293T cells transfected with ODF3 cDNA clone (Cat# [RC219533]) using MegaTran 2.0 (Cat# [TT210002]).