

Product datasheet for PH319499

TREX2 (NM_080701) Human Mass Spec Standard

Product data:

Product Type:	Mass Spec Standards
Description:	TREX2 MS Standard C13 and N15-labeled recombinant protein (NP_542432)
Species:	Human
Expression Host:	HEK293
Expression cDNA Clone or AA Sequence:	RC219499
Predicted MW:	25.9 kDa
Protein Sequence:	>RC219499 representing NM_080701 Red=Cloning site Green=Tags(s) MSEAPRAETVFLDLEATGLPSVEPEIAELSLFAVHRSSLENPEHDESGALVLPRLDKLTLCMCPERPF TAKASEITGLSSEGLARCRKAGFDGAVVRTLQAFLSRQAGPICLVAHNGFDYDFLLCAELRRLGARLPR DTVCLDTLPALRGLDRAHSHGTRARGRQGYSLGSLFHRYFRAEPSAAHSAEGDVHTLLLIFLHRAAELLA WADEQARGWAHIEPMYLPDDPSLEA TRTRPLEQKLISEEDLAANDILDYKDDDDKV
Tag:	C-Myc/DDK
Purity:	> 80% as determined by SDS-PAGE and Coomassie blue staining
Concentration:	>0.05 µg/µL as determined by microplate BCA method
Labeling Method:	Labeled with [U- ¹³ C ₆ , ¹⁵ N ₄]-L-Arginine and [U- ¹³ C ₆ , ¹⁵ N ₂]-L-Lysine
Buffer:	25 mM Tris-HCl, 100 mM glycine, pH 7.3
Storage:	Store at -80°C. Avoid repeated freeze-thaw cycles.
Stability:	Stable for 3 months from receipt of products under proper storage and handling conditions.
RefSeq:	NP_542432
RefSeq Size:	1255
RefSeq ORF:	708
Locus ID:	11219
UniProt ID:	Q9BQ50 , Q9BQ50-2
Cytogenetics:	Xq28

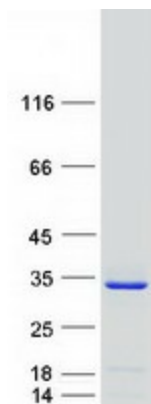


[View online »](#)

Summary: This gene encodes a nuclear protein with 3' to 5' exonuclease activity. The encoded protein participates in double-stranded DNA break repair, and may interact with DNA polymerase delta. [provided by RefSeq, Nov 2012]

Protein Families: Druggable Genome

Product images:



Coomassie blue staining of purified TREX2 protein (Cat# [TP319499]). The protein was produced from HEK293T cells transfected with TREX2 cDNA clone (Cat# [RC219499]) using MegaTran 2.0 (Cat# [TT210002]).