

## Product datasheet for PH319486

### PLA1A (NM\_015900) Human Mass Spec Standard

#### Product data:

Product Type:	Mass Spec Standards
Description:	PLA1A MS Standard C13 and N15-labeled recombinant protein (NP_056984)
Species:	Human
Expression Host:	HEK293
Expression cDNA Clone or AA Sequence:	RC219486
Predicted MW:	49.5 kDa
Protein Sequence:	>RC219486 representing NM_015900 Red=Cloning site Green=Tags(s)

MPPGPWESCFWVGGILWL SVGSSGDAPPTQPKCADFQSANLFEGTDLKVQFLLFVPSNPSCGQLVEGS  
SDLQNSGFNATLGTKLI IHGFRVLGTKPSWIDTFIRTL LRATNANVIAVDWIYGSTGVYFSAVKNVIKLS  
LEISLFLNKL LVLGVSESSIHIIGVSLGAHVGGMVGQLFGGQLGQITGLDPAGPEYTRASVEERLDAGDA  
LFVEAIHTDNDL GIRIPVGHVDYFVNGGQDQPGCPTFFYAGYSYLICDHMRVHLYISALENSCPLMAF  
PCASYKAFLAGRCLCFNPFL LSCPRIGLVEQGGVKIEPLPKEVKVYLLTTSSAPYCMHSLVEFHLKEL  
RNKDTNIEVTFLSSNITSSSKITIPKQQRYGKGI AHATPQCQINQVKFKFQSSNRVWKKDRTTIIGKFC  
TALLPVNDREKMVCLPEPVNLQASVTVSCDLKIACV

TRTRPLEQKLI SEEDLAANDILDYKDDDDKV

Tag:	C-Myc/DDK
Purity:	> 80% as determined by SDS-PAGE and Coomassie blue staining
Concentration:	>0.05 µg/µL as determined by microplate BCA method
Labeling Method:	Labeled with [U- <sup>13</sup> C <sub>6</sub> , <sup>15</sup> N <sub>4</sub> ]-L-Arginine and [U- <sup>13</sup> C <sub>6</sub> , <sup>15</sup> N <sub>2</sub> ]-L-Lysine
Buffer:	25 mM Tris-HCl, 100 mM glycine, pH 7.3
Storage:	Store at -80°C. Avoid repeated freeze-thaw cycles.
Stability:	Stable for 3 months from receipt of products under proper storage and handling conditions.
RefSeq:	<u><a href="#">NP_056984</a></u>
RefSeq Size:	1758
RefSeq ORF:	1368
Synonyms:	PS-PLA1; PSPLA1



[View online »](#)

Locus ID: 51365

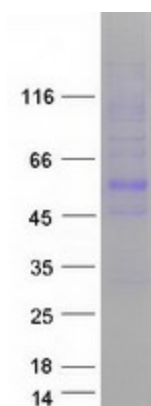
UniProt ID: [Q53H76](#)

Cytogenetics: 3q13.33

**Summary:** The protein encoded by this gene is a phospholipase that hydrolyzes fatty acids at the sn-1 position of phosphatidylserine and 1-acyl-2-lysophosphatidylserine. This secreted protein hydrolyzes phosphatidylserine in liposomes. Three transcript variants encoding different isoforms have been found for this gene.[provided by RefSeq, May 2011]

**Protein Families:** Druggable Genome, Secreted Protein

### Product images:



Coomassie blue staining of purified PLA1A protein (Cat# [TP319486]). The protein was produced from HEK293T cells transfected with PLA1A cDNA clone (Cat# [RC219486]) using MegaTran 2.0 (Cat# [TT210002]).