

Product datasheet for PH319476

TREML1 (NM_178174) Human Mass Spec Standard

Product data:

Product Type:	Mass Spec Standards
Description:	TREML1 MS Standard C13 and N15-labeled recombinant protein (NP_835468)
Species:	Human
Expression Host:	HEK293
Expression cDNA Clone or AA Sequence:	RC219476
Predicted MW:	32.5 kDa
Protein Sequence:	>RC219476 representing NM_178174 Red=Cloning site Green=Tags(s) MGLTLLLLLLLLGLEGGIIVGSLPEVLQAPVGSILVQCHYRLQDVKAQKVWCRFLPEGCQPLVSSAVDRR APAGRRFTLTDLGGLLQVEMVTLQEEDAGEYGCMVDGARGPQILHRVSLNLPPEEEETHKIGSLAEN AFSDPAGSANPLEPSQDEKSIPLIWGAVLLVGLLVAAVVLFVAVMAKRKQGNRLGVCGRFLSSRVSGMNPS SVVHHVSDSGPAAELPLDVPHIRLDSPPSFDNTTYTSLPLDSPSGKPSLPAPSSLPPLPPKVLVCSKPVT YATVIFPGGNKGGGTSCGPAQNPPNNQTPSS TRTRPLEQKLISEEDLAANDILDYKDDDDKV
Tag:	C-Myc/DDK
Purity:	> 80% as determined by SDS-PAGE and Coomassie blue staining
Concentration:	>0.05 µg/µL as determined by microplate BCA method
Labeling Method:	Labeled with [U- ¹³ C ₆ , ¹⁵ N ₄]-L-Arginine and [U- ¹³ C ₆ , ¹⁵ N ₂]-L-Lysine
Buffer:	25 mM Tris-HCl, 100 mM glycine, pH 7.3
Storage:	Store at -80°C. Avoid repeated freeze-thaw cycles.
Stability:	Stable for 3 months from receipt of products under proper storage and handling conditions.
RefSeq:	NP_835468
RefSeq Size:	980
RefSeq ORF:	933
Synonyms:	dj238O23.3; GLTL1825; PRO3438; TLT-1; TLT1
Locus ID:	340205



[View online »](#)

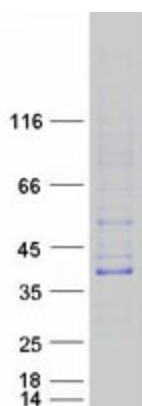
UniProt ID: [Q86YW5](#)

Cytogenetics: 6p21.1

Summary: This gene encodes a member of the triggering receptor expressed on myeloid cells-like (TREM) family. The encoded protein is a type 1 single Ig domain orphan receptor localized to the alpha-granule membranes of platelets. The encoded protein is involved in platelet aggregation, inflammation, and cellular activation and has been linked to Gray platelet syndrome. Alternative splicing results in multiple transcript variants [provided by RefSeq, Nov 2012]

Protein Families: Druggable Genome, Transmembrane

Product images:



Coomassie blue staining of purified TREML1 protein (Cat# [TP319476]). The protein was produced from HEK293T cells transfected with TREML1 cDNA clone (Cat# [RC219476]) using MegaTran 2.0 (Cat# [TT210002]).