

Product datasheet for PH319453

Natriuretic Peptide Receptor C (NPR3) (NM_000908) Human Mass Spec Standard

Product data:

Product Type:	Mass Spec Standards
Description:	NPR3 MS Standard C13 and N15-labeled recombinant protein (NP_000899)
Species:	Human
Expression Host:	HEK293
Expression cDNA Clone or AA Sequence:	RC219453
Predicted MW:	59.6 kDa
Protein Sequence:	>RC219453 representing NM_000908 Red=Cloning site Green=Tags(s)

MPSLLVLTFSPCVLLGWALLAGGTGGGGVGGGGGAGIGGGRQEREALPPQKIEVLVLLPQDDSYLFSLT
RVRPAIEYALRSVEGNGTGRRLLPPGTRFQVAYEDSDCGNRALFSLVDRVAAARGAKPDLILGPVCEYAA
APVARLASHWDLPLMSAGALAAGFQHKDSEYSHLTRVAPAYAKMGEMMLALFRHHHWSRAALVYSDDKLE
RNCYFTLEGVHEVFQEEGLHTSIYSFDETKDLLEDIVRNIQASERVVIMCASSDTIRSIMLVAHRHGMT
SGDYAFFNIELFNSSSYGDGSKRGDKHDFEAKQAYSSLQTVTLRLTKPEFEKFSMEVKSSVEKQGLNM
EDYVNMFVEGFHDAILLYVLALHEVLRAGYSKKDGGKIIQQTWNRTFEGIAGQVSI DANGDRYGDVSVIA
MTDVEAGTQEVIGDYFGKEGRFEMRPNVKYPWGPKLRLIDENRIVEHTNSPCKSCGLEESAVTGIVVGA
LLGAGLLMAFYFRKKYRITIERRTQEEENLKGHRELREDSIRSHFSVA

TRTRPLEQKLI SEEDLAANDILDYKDDDDKV

Tag:	C-Myc/DDK
Purity:	> 80% as determined by SDS-PAGE and Coomassie blue staining
Concentration:	>0.05 µg/µL as determined by microplate BCA method
Labeling Method:	Labeled with [U- 13C6, 15N4]-L-Arginine and [U- 13C6, 15N2]-L-Lysine
Buffer:	25 mM Tris-HCl, 100 mM glycine, pH 7.3
Storage:	Store at -80°C. Avoid repeated freeze-thaw cycles.
Stability:	Stable for 3 months from receipt of products under proper storage and handling conditions.
RefSeq:	<u>NP_000899</u>
RefSeq Size:	2651
RefSeq ORF:	1620



[View online »](#)

Synonyms: ANP-C; ANPR-C; ANPRC; C5orf23; GUCY2B; NPR-C; NPRC

Locus ID: 4883

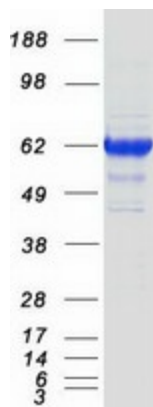
UniProt ID: [P17342](#), [Q60I31](#)

Cytogenetics: 5p13.3

Summary: This gene encodes one of three natriuretic peptide receptors. Natriuretic peptides are small peptides which regulate blood volume and pressure, pulmonary hypertension, and cardiac function as well as some metabolic and growth processes. The product of this gene encodes a natriuretic peptide receptor responsible for clearing circulating and extracellular natriuretic peptides through endocytosis of the receptor. Multiple transcript variants encoding different isoforms have been found for this gene.[provided by RefSeq, Feb 2011]

Protein Families: Druggable Genome, Transmembrane

Product images:



Coomassie blue staining of purified NPR3 protein (Cat# [TP319453]). The protein was produced from HEK293T cells transfected with NPR3 cDNA clone (Cat# [RC219453]) using MegaTran 2.0 (Cat# [TT210002]).