

Product datasheet for PH319439

METTL2B (NM_018396) Human Mass Spec Standard

Product data:

Product Type:	Mass Spec Standards
Description:	METTL2B MS Standard C13 and N15-labeled recombinant protein (NP_060866)
Species:	Human
Expression Host:	HEK293
Expression cDNA Clone or AA Sequence:	RC219439
Predicted MW:	43.2 kDa
Protein Sequence:	>RC219439 representing NM_018396 Red=Cloning site Green=Tags(s)
	MAGSYPEGAPAVLADKRQQFGSRFLRDPARVFHFNWVSEEQAAAAERKVVQENSIQRCVQEKQVDY EINAHKYWDFYKIHENGFFKDRHWFTEFPELAPSQNQNHDKDFLENKSEVPECRNEDGPGIMEEQ HKCSSKLEHKTQTPPVEENVTKISDLEICAEDEFPGSSATYRILEVGCVGNTVPILQTNNDPGLFVY CCDFSSTAIELVQTNSEYDPSRCFAFVHDLCDDEKSYPVPGSLDIIILIFVLSAIVPDKMQKAINRLSR LLKPGGMMLLRDYGRYDMAQLRFKKGQCLSGNFYVRGDGTRVYFFTQEELDTLFTTAGLEKVQNLVDRRL QVNRGKQLTMYRVWIQCKYCKPLLSSTS
	TRTRPLEQKLI SEEDLAANDILDYKDDDDKV
Tag:	C-Myc/DDK
Purity:	> 80% as determined by SDS-PAGE and Coomassie blue staining
Concentration:	>0.05 µg/µL as determined by microplate BCA method
Labeling Method:	Labeled with [U- ¹³ C ₆ , ¹⁵ N ₄]-L-Arginine and [U- ¹³ C ₆ , ¹⁵ N ₂]-L-Lysine
Buffer:	25 mM Tris-HCl, 100 mM glycine, pH 7.3
Storage:	Store at -80°C. Avoid repeated freeze-thaw cycles.
Stability:	Stable for 3 months from receipt of products under proper storage and handling conditions.
RefSeq:	NP_060866
RefSeq Size:	2192
RefSeq ORF:	1134
Synonyms:	METL; METTL2; METTL2A; PSENIP1
Locus ID:	55798



[View online »](#)

UniProt ID: [Q6P1Q9](#)

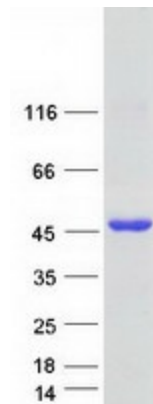
Cytogenetics: 7q32.1

Summary: This gene is a member of a family of methyltransferases that share homology with, but are distinct from, the UbiE family of methyltransferases. Alternatively spliced variants which encode different protein isoforms have been described; however, not all variants have been fully characterized. [provided by RefSeq, Jul 2008]

Protein Families: Druggable Genome

Protein Pathways: Androgen and estrogen metabolism, Histidine metabolism, Selenoamino acid metabolism, Tyrosine metabolism

Product images:



Coomassie blue staining of purified METTL2B protein (Cat# [TP319439]). The protein was produced from HEK293T cells transfected with METTL2B cDNA clone (Cat# [RC219439]) using MegaTran 2.0 (Cat# [TT210002]).