

## Product datasheet for PH319432

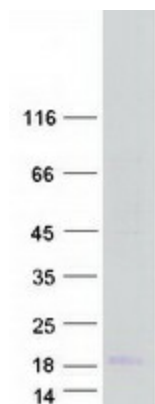
### BAGE2 (NM\_182482) Human Mass Spec Standard

#### Product data:

|                                       |  |
|---------------------------------------|--|
| Product Type:                         | Mass Spec Standards  |
| Description:                          | BAGE2 MS Standard C13 and N15-labeled recombinant protein (NP_872288)  |
| Species:                              | Human  |
| Expression Host:                      | HEK293   |
| Expression cDNA Clone or AA Sequence: | RC219432   |
| Predicted MW:                         | 12 kDa   |
| Protein Sequence:                     | <p>&gt;RC219432 representing NM_182482</p> <p>Red=Cloning site Green=Tags(s)</p> <p>MAAGVVFLALSAQLLQARLMKEESPVVSWRLEPEDGTALDVHFVSTLEPLSNAVKRNVPKIIILVLQEP<br/>           TPFRI SVTSSCFVQNTLTKLLKDRRKMQTVQCATARETS</p> <p>TRTRPLEQKLISEEDLAANDILDYKDDDDKV</p> |
| Tag:                                  | C-Myc/DDK  |
| Purity:                               | > 80% as determined by SDS-PAGE and Coomassie blue staining  |
| Concentration:                        | >0.05 µg/µL as determined by microplate BCA method   |
| Labeling Method:                      | Labeled with [U- <sup>13</sup> C <sub>6</sub> , <sup>15</sup> N <sub>4</sub> ]-L-Arginine and [U- <sup>13</sup> C <sub>6</sub> , <sup>15</sup> N <sub>2</sub> ]-L-Lysine   |
| Buffer:                               | 25 mM Tris-HCl, 100 mM glycine, pH 7.3   |
| Storage:                              | Store at -80°C. Avoid repeated freeze-thaw cycles.   |
| Stability:                            | Stable for 3 months from receipt of products under proper storage and handling conditions.   |
| RefSeq:                               | <u><a href="#">NP_872288</a></u>   |
| RefSeq Size:                          | 1891   |
| RefSeq ORF:                           | 327  |
| Synonyms:                             | CT2.2  |
| Locus ID:                             | 85319  |
| Cytogenetics:                         | 21p11.2  |
| Protein Families:                     | Druggable Genome   |


[View online »](#)

## Product images:



Coomassie blue staining of purified BAGE2 protein (Cat# [TP319432]). The protein was produced from HEK293T cells transfected with BAGE2 cDNA clone (Cat# [RC219432]) using MegaTran 2.0 (Cat# [TT210002]).