

Product datasheet for PH319414

MT1E (NM_175617) Human Mass Spec Standard

Product data:

Product Type:	Mass Spec Standards
Description:	MT1E MS Standard C13 and N15-labeled recombinant protein (NP_783316)
Species:	Human
Expression Host:	HEK293
Expression cDNA Clone or AA Sequence:	RC219414
Predicted MW:	6 kDa
Protein Sequence:	>RC219414 protein sequence Red =Cloning site Green =Tags(s) MDPNCSCATGGSCTCAGSCKCKECKCTSCKKSCCSCCPVGCACKCAQGCVCKGASEKCSCCA TRTRP LEQKLISEEDLAANDILDYKDDDDKV
Tag:	C-Myc/DDK
Purity:	> 80% as determined by SDS-PAGE and Coomassie blue staining
Concentration:	>0.05 µg/µL as determined by microplate BCA method
Labeling Method:	Labeled with [U- ¹³ C ₆ , ¹⁵ N ₄]-L-Arginine and [U- ¹³ C ₆ , ¹⁵ N ₂]-L-Lysine
Buffer:	25 mM Tris-HCl, 100 mM glycine, pH 7.3
Storage:	Store at -80°C. Avoid repeated freeze-thaw cycles.
Stability:	Stable for 3 months from receipt of products under proper storage and handling conditions.
RefSeq:	NP_783316
RefSeq Size:	519
RefSeq ORF:	183
Synonyms:	MT-1E; MT-IE; MT1; MTD
Locus ID:	4493
UniProt ID:	P04732
Cytogenetics:	16q13

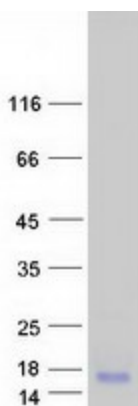


[View online »](#)

Summary: Metallothioneins have a high content of cysteine residues that bind various heavy metals; these proteins are transcriptionally regulated by both heavy metals and glucocorticoids. [UniProtKB/Swiss-Prot Function]

Protein Families: Druggable Genome

Product images:



Coomassie blue staining of purified MT1E protein (Cat# [TP319414]). The protein was produced from HEK293T cells transfected with MT1E cDNA clone (Cat# [RC219414]) using MegaTran 2.0 (Cat# [TT210002]).