

Product datasheet for PH319402

Xanthine Oxidase (XDH) (NM_000379) Human Mass Spec Standard

Product data:

Product Type:	Mass Spec Standards
Description:	XDH MS Standard C13 and N15-labeled recombinant protein (NP_000370)
Species:	Human
Expression Host:	HEK293
Expression cDNA Clone or AA Sequence:	RC219402
Predicted MW:	146.2 kDa
Protein Sequence:	>RC219402 representing NM_000379 Red=Cloning site Green=Tags(s)

MTADKLVFFVNGRKVVEKNADPETLLAYLRRKGLSGTKLGCGECCGACTVMLSKYDRLQNKIVHFSANACLAPICSLHHVAVTTVEGIGSTKTRLHPVQERIAKSHGSQCGFCTPGIVMSMYTLRNQPEPTMEEIE NAFQGNLCRGTGYRPILQGFRTFARDGGCCGGDGNPNCCMNQKDHVSLSPSLFKPEEFTPLDPTQEP IFPEELLRLKDTPRKQLRFEGERVTVIQAQSTLKEKLLDLKAQHPDAKL VVGNTIEIGIEMKFNMLFPMIVC PAWIPELNSVEHGPDGISFGAACPLSIVEKTLVDAVAKLPAQKTEVFRGVLEQLRWFAGKQVKSVASVGG NIITASPIDLNPVFMASGAKLTLVSRGTRRTVQMDHTFFPGYRKTLLSPEIILL SIEIPYSREGEYFSA FKQASRREDDIAKVTSGMRVLFKPGTTEVQELALCYGGMANRTISALKTTQRQLSKLWKEELLQDVCAGL AEELHLPPDAPGGMVDFRCTLTL SFFFK FYLTVLQKLGQENLEDKCGKLDPTFASATLL FQKDPADVQL FQEVPKGQSEEDMVGRLPHLAADMQASGEAVY CDDIPRYENELSLRLVTSTRAHAKIKSIDTSEAKKVP GFVCFISADDVPGSNITGICNDETVFAKDKVTCVGHII GAVVADTPEHTQRAAQGVKITYEELPAITIE DAIKNSFYGPELKIEKGDLLKGFSEADNVVSGEIIYIGGQEHFYLETHCTIAVPKGEAGEMELFVSTQNT MKTQSFVAKMLGVPANRIVVRVKRMGGGFGGKETRSTVVSTAVALAAKYTGRPVRCMLDRDEDMLITGGR HPFLARYKVGFMKTGTVALEVDHFSNVGNTQDLSQSIMERALFHMDNCKYKIPNIRGTGRLCKTNLPSNT AFRGFGGPGQMLIAECWSEVAVTCGMPAEEVRRKNLYKEGDLTHFNQKLEGFTLPRCWEECLASSQYHARKSEVDKFNKENCWKKRGLCIIPTKFGISFTVPFLNQAGALLHVYTDGSVLLTHGGTEMGQGLHTKMVQV ASRALKIPTSKIYISETSTNTVPNTSPTAASVSADLNGQAVYAAQCQTILKRLPEYKKNPSGWSWEDWVTA AYMDTVSLSATGFYRTPNLGYSFETNSGNPFHYFSYGVACSEVEIDCLTGDHKNLRTDI VMDVGSLSLNP AIDIGQVEGAFVQGLGLFTLEELHYSPEGSLHTRGPSTYKIPAFGSIPIEFVRSLLRDCPNKKAIIYASKAV GEPPLFLAASIFFAIKDAIRAARAQHTGNNVKELFRLDSPATPEKIRNACVDKFTTLCVTVGPENCKPWS VRV

TRTRPLEQKLI SEEDLAANDILDYKDDDDKV

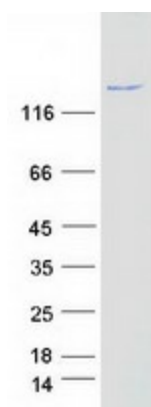
Tag:	C-Myc/DDK
Purity:	> 80% as determined by SDS-PAGE and Coomassie blue staining
Concentration:	>0.05 µg/µL as determined by microplate BCA method



[View online »](#)

Labeling Method:	Labeled with [U- ¹³ C ₆ , ¹⁵ N ₄]-L-Arginine and [U- ¹³ C ₆ , ¹⁵ N ₂]-L-Lysine
Buffer:	25 mM Tris-HCl, 100 mM glycine, pH 7.3
Storage:	Store at -80°C. Avoid repeated freeze-thaw cycles.
Stability:	Stable for 3 months from receipt of products under proper storage and handling conditions.
RefSeq:	NP_000370
RefSeq Size:	4428
RefSeq ORF:	3999
Synonyms:	XAN1; XO; XOR
Locus ID:	7498
UniProt ID:	P47989
Cytogenetics:	2p23.1
Summary:	Xanthine dehydrogenase belongs to the group of molybdenum-containing hydroxylases involved in the oxidative metabolism of purines. The encoded protein has been identified as a moonlighting protein based on its ability to perform mechanistically distinct functions. Xanthine dehydrogenase can be converted to xanthine oxidase by reversible sulfhydryl oxidation or by irreversible proteolytic modification. Defects in xanthine dehydrogenase cause xanthinuria, may contribute to adult respiratory stress syndrome, and may potentiate influenza infection through an oxygen metabolite-dependent mechanism. [provided by RefSeq, Jan 2014]
Protein Families:	Druggable Genome
Protein Pathways:	Caffeine metabolism, Drug metabolism - other enzymes, Metabolic pathways, Purine metabolism

Product images:



Coomassie blue staining of purified XDH protein (Cat# [TP319402]). The protein was produced from HEK293T cells transfected with XDH cDNA clone (Cat# [RC219402]) using MegaTran 2.0 (Cat# [TT210002]).