

Product datasheet for PH319395

Synapsin III (SYN3) (NM_003490) Human Mass Spec Standard

Product data:

Product Type:	Mass Spec Standards
Description:	SYN3 MS Standard C13 and N15-labeled recombinant protein (NP_003481)
Species:	Human
Expression Host:	HEK293
Expression cDNA Clone or AA Sequence:	RC219395
Predicted MW:	63.1 kDa
Protein Sequence:	>RC219395 representing NM_003490 Red=Cloning site Green=Tags(s)

MNFLRRRLSDSSFMANLPNGYMTDLQRPDSSTSSPASPAMERRHPQPLAASFSSPGSSLFSSLSAMKQA
PQATSGLEPPGPSTPIVQRPRILLVIDDAHTDWSKYFHGKKVNGEIEIRVEQAEFSELNLAAYVTGGCM
VDMQVVRNGTKVVSRSFKPDFILVRQHAYSMALGEDYRSLVIGLQYGGPLAVNSLYSVYFCSKPWFVFSQ
LIKIFHSLGPEKFPLVEQTFPPNHKPMVTAHPFPVVVKLGHAHAGMGKIKVENQLDFQDITSVVAMAKTY
ATTEAFIDSKYDIRIQKIGSNYKAYMRTSISGNWKANTGSAMLEQVAMTERYRLWVDSCEMFGGLDICA
VKAVHSKDGRDYIEVMDSSMPLIGEHVEEDRQLMADLVVSKMSQLPMPGGTAPSPLRPWAPQIKSAKSP
GQAQLGPQLGQPQPRPPQGGPRQAQSPQPRSGSPSQQLSPQGGQPLSPQSGSPQQRSPGSPQLSRA
SSGSSPNQASKPGATLASQPRPPVQGRSTSQQGEESSKKPAPPHPHLNKSQSLTNSLSTSDTSQRGTPSED
EAKAETIRNLRKSFASLFS

TRTRPLEQKLISEEDLAANDILDYKDDDDKV

Tag:	C-Myc/DDK
Purity:	> 80% as determined by SDS-PAGE and Coomassie blue staining
Concentration:	>0.05 µg/µL as determined by microplate BCA method
Labeling Method:	Labeled with [U- ¹³ C ₆ , ¹⁵ N ₄]-L-Arginine and [U- ¹³ C ₆ , ¹⁵ N ₂]-L-Lysine
Buffer:	25 mM Tris-HCl, 100 mM glycine, pH 7.3
Storage:	Store at -80°C. Avoid repeated freeze-thaw cycles.
Stability:	Stable for 3 months from receipt of products under proper storage and handling conditions.
RefSeq:	NP_003481
RefSeq Size:	2918
RefSeq ORF:	1740



[View online »](#)

Locus ID: 8224

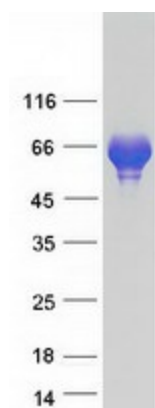
UniProt ID: [O14994](#), [A0A024R118](#)

Cytogenetics: 22q12.3

Summary: This gene is a member of the synapsin gene family. Synapsins encode neuronal phosphoproteins which associate with the cytoplasmic surface of synaptic vesicles. Family members are characterized by common protein domains, and they are implicated in synaptogenesis and the modulation of neurotransmitter release, suggesting a potential role in several neuropsychiatric diseases. The protein encoded by this gene shares the synapsin family domain model, with domains A, C, and E exhibiting the highest degree of conservation. The protein contains a unique domain J, located between domains C and E. Based on this gene's localization to 22q12.3, a possible schizophrenia susceptibility locus, and the established neurobiological roles of the synapsins, this family member may represent a candidate gene for schizophrenia. The TIMP3 gene is located within an intron of this gene and is transcribed in the opposite direction. Alternative splicing of this gene results in multiple splice variants that encode different isoforms. [provided by RefSeq, Oct 2008]

Protein Families: Secreted Protein

Product images:



Coomassie blue staining of purified SYN3 protein (Cat# [TP319395]). The protein was produced from HEK293T cells transfected with SYN3 cDNA clone (Cat# [RC219395]) using MegaTran 2.0 (Cat# [TT210002]).