

Product datasheet for PH319388

Laeverin (LVRN) (NM_173800) Human Mass Spec Standard

Product data:

Product Type:	Mass Spec Standards
Description:	AQPEP MS Standard C13 and N15-labeled recombinant protein (NP_776161)
Species:	Human
Expression Host:	HEK293
Expression cDNA Clone or AA Sequence:	RC219388
Predicted MW:	113.1 kDa
Protein Sequence:	>RC219388 representing NM_173800 Red=Cloning site Green=Tags(s)

MGPPSSSGFYVSRVAVALLLAGLVAALLLALAVLAALYGHCEVPPSELPLGRDSEAESSPPLRQKPTPTP
KPSSARELAVTTTPSNWRPPGPWDQLRLPPWLVPLHYDLELWPQLRPDELPAAGSLPFTGRVNITVRCCTVA
TSRLLLHSLFQDCERAERGPLSPGTGNATVGRVPVDDVWFALDTEYMVLELSEPLKPGSSYELQLSFSG
LVKEDLREGLFLNVYTDQGERRALLASQLEPTFARYVFPFCFDEPALKATFNITMIHHPYSVALSNMPKLG
QSEKEDVNGSKWTVTTFSTTPHMPTYLVAFVICDYDHVNRTERGKEIRIWARDKAIANGSADFALNITGP
IFSFLLEDLFNISYSLPKTDIIALPSFDNHAMENWGLMIFDESGLLLEPKDQLTEKKTLSYVVSHEIGHQ
WFGNLTVMNWNWIWLNNEGFASYFEFEVINYFNPKLPRNEIFFSNILHNILREDHALVTRAVAMKVENFK
TSEIQELFDIFTYSGASMARMLSCFLNEHLFVSALKSYLKTFSYSNAEQDDLWRHFQMAIDDQSTVILP
ATIKNIMDSWTHQSGFPVITLNVSTGVMKQEPFYLENIKNRTLLTSNDTWIWPILWIKNGTTQPLVWLDQ
SSKVFPQMVSQSDSDHDWVILNLMNTGYRVNYDKLGWKKLNQQLKDPKAIPIVHRLQLIDDAFSLSKNN
YIEIETALELTKYLAEEDEIIVWHTVLVNLVTRDLVSEVNIYDIYSLKRYLLKRLNLINWNIYSTIIREN
VLALQDDYLALISLEKLFVTACWLGLEDCLQLSKELFAKWVDHPENEIPYPIKDVVLCYGIALGSDKEWD
ILLNTYTNTTNKEEKIQLAYAMSCSKDPWILNRYMEYAIISTSPFTSNETNIEVVASSEVGRYVAKDFLV
NNWQAVSKRYGTQSLINLIYTIIGRTVTTDLQIVELQQFFSNMLEEHRIRVHANLQTIKENLKNKLSA
RIAAWLRRNT

TRTRPLEQKLISEEDLAANDILDYKDDDDKV

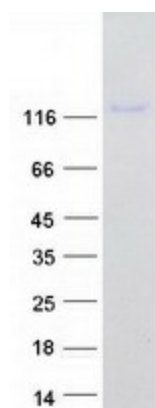
Tag:	C-Myc/DDK
Purity:	> 80% as determined by SDS-PAGE and Coomassie blue staining
Concentration:	>0.05 µg/µL as determined by microplate BCA method
Labeling Method:	Labeled with [U- ¹³ C ₆ , ¹⁵ N ₄]-L-Arginine and [U- ¹³ C ₆ , ¹⁵ N ₂]-L-Lysine
Buffer:	25 mM Tris-HCl, 100 mM glycine, pH 7.3
Storage:	Store at -80°C. Avoid repeated freeze-thaw cycles.



[View online »](#)

Stability:	Stable for 3 months from receipt of products under proper storage and handling conditions.
RefSeq:	NP_776161
RefSeq Size:	4502
RefSeq ORF:	2970
Synonyms:	APQ; AQPEP; TAQPEP
Locus ID:	206338
UniProt ID:	Q6Q4G3 , Q0P5U8
Cytogenetics:	5q23.1
Summary:	Metalloprotease which may be important for placentation by regulating biological activity of key peptides at the embryo-maternal interface. On synthetic substrates it shows a marked preference for Leu-4-methylcoumaryl-7-amide (Leu-MCA) over Met-MCA, Arg-LCA and Lys-LCA. Cleaves the N-terminal amino acid of several peptides such as angiotensin-3, kisspeptin-10 and endokinin C.[UniProtKB/Swiss-Prot Function]
Protein Families:	Protease, Transmembrane

Product images:



Coomassie blue staining of purified LVRN protein (Cat# [TP319388]). The protein was produced from HEK293T cells transfected with LVRN cDNA clone (Cat# [RC219388]) using MegaTran 2.0 (Cat# [TT210002]).