

Product datasheet for PH319383

SPATA25 (NM_080608) Human Mass Spec Standard

Product data:

Product Type:	Mass Spec Standards
Description:	C20orf165 MS Standard C13 and N15-labeled recombinant protein (NP_542175)
Species:	Human
Expression Host:	HEK293
Expression cDNA Clone or AA Sequence:	RC219383
Predicted MW:	23.8 kDa
Protein Sequence:	>RC219383 protein sequence Red=Cloning site Green=Tags(s) MSYFRTPQTHPGPLPSGQGGGAASPLSLGLCSPVEPVVVASGGTGPLSQKAEQVAPAAQAWGPALAMPQA RGCPGGTSWETLRKEYSRNCHKFPVHRQLESLGWDNGYSRSRAPDLGGPSRPRPLMLCGLSPRVLPVPS AVGKEASSQPDICILTLAMMIAGIPTVPVPGVREEDLIWAAQAFMMAHPEPEGAVEGARWEQAHHAHTASG KMPLVRSKRGQPPGSCL TRTRPLEQKLISEEDLAANDILDYKDDDDKV
Tag:	C-Myc/DDK
Purity:	> 80% as determined by SDS-PAGE and Coomassie blue staining
Concentration:	>0.05 µg/µL as determined by microplate BCA method
Labeling Method:	Labeled with [U- ¹³ C ₆ , ¹⁵ N ₄]-L-Arginine and [U- ¹³ C ₆ , ¹⁵ N ₂]-L-Lysine
Buffer:	25 mM Tris-HCl, 100 mM glycine, pH 7.3
Storage:	Store at -80°C. Avoid repeated freeze-thaw cycles.
Stability:	Stable for 3 months from receipt of products under proper storage and handling conditions.
RefSeq:	NP_542175
RefSeq Size:	752
RefSeq ORF:	681
Synonyms:	C20orf165; dj337O18.8; TSG23
Locus ID:	128497
UniProt ID:	Q9BR10

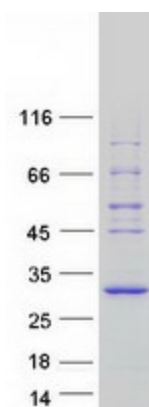


[View online »](#)

Cytogenetics: 20q13.12

Summary: May play a role in spermatogenesis.[UniProtKB/Swiss-Prot Function]

Product images:



Coomassie blue staining of purified SPATA25 protein (Cat# [TP319383]). The protein was produced from HEK293T cells transfected with SPATA25 cDNA clone (Cat# [RC219383]) using MegaTran 2.0 (Cat# [TT210002]).