

## Product datasheet for PH319377

### C14orf174 (SAM D15) (NM\_001010860) Human Mass Spec Standard

#### Product data:

Product Type:	Mass Spec Standards
Description:	C14orf174 MS Standard C13 and N15-labeled recombinant protein (NP_001010860)
Species:	Human
Expression Host:	HEK293
Expression cDNA Clone or AA Sequence:	RC219377
Predicted MW:	77 kDa
Protein Sequence:	>RC219377 representing NM_001010860 Red=Cloning site Green=Tags(s)

MAEVPEDYDSGPDEDGELPERPELPGHLKLYENAEPDTMAKADSKLPAEIIYQEPQPETEEEDFKEGEPD  
SAKNVQLKPGGTSQEGIAKESKRDVPSSETEPGIHQEVKSETSRMGEFFKDLEAPMDETHKESDLEPPPEE  
AKPNVTEDEVFLESAMETDPPVPPPTETMSEVSGATVRERNLELLEETEPGVPEESLRVQHEETGLEPPE  
QTKQDFPSEKLGESLEETDLQPPKMTKPETPEETQRESTEKKRTEPPEQARLEFLEKEPRKSSEEAGLEP  
PEETQPEVPEEMQRKATEEKGTLPERTKPDFDHPKPRKSTDENVPEPLEEIKLEFPEEESRKTNEETIL  
EQSEMMPESPEEIRKSNEKKNQPPEETGPVLPQEINPQVEEKTQTKPTEKILELPDETKPRETHVEFS  
KEDRPEPIKSKYSVGNDELEHREPGRKLSLSDKFRKEYALGSLRESEESIGTHYEFLLQPLQKLLNVSE  
ECSYSDPSESQTELEFVHEKEVVDLSQELKERVSEDEDTQPEKGTLELQFEHLNWDPEEVAEWISQLGFP  
QYKECFITNFISGRKLIHVNCSNLPQMGITNFMKAI SRHTQELLEIEEPLFKRSISLPHYRDIIGLYLE  
QKGTGIKSDSLTSEFVKAAGLQDYAPEITAPEENEELPCTEP

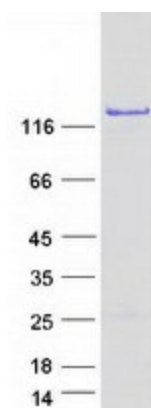
TRTRPLEQKLI SEEDLAANDILDYKDDDDKV

Tag:	C-Myc/DDK
Purity:	> 80% as determined by SDS-PAGE and Coomassie blue staining
Concentration:	>0.05 µg/µL as determined by microplate BCA method
Labeling Method:	Labeled with [U- 13C6, 15N4]-L-Arginine and [U- 13C6, 15N2]-L-Lysine
Buffer:	25 mM Tris-HCl, 100 mM glycine, pH 7.3
Storage:	Store at -80°C. Avoid repeated freeze-thaw cycles.
Stability:	Stable for 3 months from receipt of products under proper storage and handling conditions.
RefSeq:	<a href="#">NP_001010860</a>
RefSeq Size:	2025



[View online »](#)

RefSeq ORF:	2022
Synonyms:	C14orf174; FAM15A
Locus ID:	161394
UniProt ID:	<a href="#">Q9P1V8</a>
Cytogenetics:	14q24.3

**Product images:**

Coomassie blue staining of purified SAMD15 protein (Cat# [TP319377]). The protein was produced from HEK293T cells transfected with SAMD15 cDNA clone (Cat# [RC219377]) using MegaTran 2.0 (Cat# [TT210002]).