

Product datasheet for PH319376

Neurexin 1 (NRXN1) (NM_004801) Human Mass Spec Standard

Product data:

Product Type:	Mass Spec Standards
Description:	NRXN1 MS Standard C13 and N15-labeled recombinant protein (NP_004792)
Species:	Human
Expression Host:	HEK293
Expression cDNA Clone or AA Sequence:	RC219376
Predicted MW:	161.9 kDa
Protein Sequence:	>RC219376 representing NM_004801 Red=Cloning site Green=Tags(s)

MGTALLQRGGCFLLCLSLLLGCAELGSGLEFPGAEGQWTRFPKWNACCESEMSFQLKTRSARGLVLYF
DDEGFCDFLELILTRGGRLQLSFSIFCAEPATLLADTPVNDGAWHSVRIRRRQFRNTTLFIDQVEAKWVEV
KSKRRDMTVFSGLFVGGLPPELRAAALKTLASVREPERPKGWIRDVVRVNSSQVLPVDSGEVKLDDEPPN
SGGGSPCEAGEEGEGGVCLNGGVCVSVDDQAVDCSRTGFRGKDCSQEDNNVEGLAHLMMGDQKSKGKE
EYIATFKGSEYFCYDL SQNPIQSSSDEITL SFKTLQRNGLMLHTGKSADYVNLALKN GAVSLVINL GSGA
FEALVEPVNGKFNDAWHDVKVTRNLRQHSGIGHAMVTISVDGILTTTGYTQEDYTMLGSDDFVYGGSP
STADLPGSPVSNFMGCLKEVVYKNDVRLELSRLAKQGDPKMKIHGVVAFKCNVATLDPITFETPESF
ISLPKWNAKKTGSI SFDFRTPENGLILF SHGKPRHQKDAKHPQMIKVDFFAIEMLDGHL YLLLDMGSGT
IKIKALLKKVNDGEWYHVDVQRDGRSGTISVNTLRTPYTAPGESEILDLDDEL YLGGLPENKAGLVFPT
VWTALLNYGYVGCIRDLFIDGQSKDIRQMAEVQSTAGVKPSCSKETAKPCLSNPCKNNGMCRDGNWRYVC
DCSGTGYLGRSCREATVL SYDGSFMFKIQLPVMHTEAEDVSLRFRSQRAYGILMATTSRDSADTLRLE
LDAGRVKLTVNLD CIRINCNSKGPETL FAGYNLNDNEWHTVRVVRGKSLKLTVDQDQAMTGMAGDHT
RLEFHNIETGII TERRYLSVSNF IGHQLSLTFNGMAYIDLCKNGDIDYCELNARFGFRNI IADPVTFK
TKSSYVALATLQAYTSMHLFFQFKTSLDGLILYNSGDGNDFIVVELVKGYLHYVFDLNGANLIKSSN
KPLNDNQWHNMI SRDTSNLHTVKIDTKITTTQITAGARNLDLKS DLYIGGVAKETYKSLPKLVHAKEGFQ
GCLASVDLNGRLPDLISDALFCNGQIERGCEGPSTTCQEDSCSNQGVCLQQWDFSCDCSMTSFSGPLCN
DPGTTYIFSKGGQITYKWPPNDRPSTRADRLAIGFSTVQKEAVLVYRVDSSSGLGDYLELHIHQKIGVK
FNVGTDIIAIEESNAIINDGKYHVVRFRTRSGGNATLQVDSWPVIERYPAGRQLTIFNSQATIIIGGKEQG
QPFQGLSGLYYNGLKVLNMAAENDANIAIVGNVRLVGEVPSSMTTESTATAMQSEMSTSIMETTTTLAT
STARRGKPPKPEISQTTDDILVASAECPSDDEDIDPCEPSSGGLANPTRAGGREPYPGSAEVIRESST
TGMVVGIVAAAALCILILLYAMYKYRNRDEGSYHVDESRYNISNSAQSN GAVVKEKQPSSAKSSNKKNKN
KDKEYYY

TRTRPLEQKLISEEDLAANDILDYKDDDDKV

Tag:	C-Myc/DDK
Purity:	> 80% as determined by SDS-PAGE and Coomassie blue staining



[View online >](#)

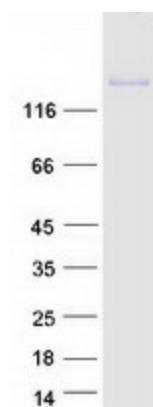
Concentration:	>0.05 µg/µL as determined by microplate BCA method
Labeling Method:	Labeled with [U- ¹³ C ₆ , ¹⁵ N ₄]-L-Arginine and [U- ¹³ C ₆ , ¹⁵ N ₂]-L-Lysine
Buffer:	25 mM Tris-HCl, 100 mM glycine, pH 7.3
Storage:	Store at -80°C. Avoid repeated freeze-thaw cycles.
Stability:	Stable for 3 months from receipt of products under proper storage and handling conditions.
RefSeq:	NP_004792
RefSeq Size:	9368
RefSeq ORF:	4431
Synonyms:	Hs.22998; PTHSL2; SCZD17
Locus ID:	9378
UniProt ID:	Q9ULB1
Cytogenetics:	2p16.3

Summary: This gene encodes a single-pass type I membrane protein that belongs to the neurexin family. Neurexins are cell-surface receptors that bind neuroligins to form Ca(2+)-dependent neurexin/neuroligin complexes at synapses in the central nervous system. This complex is required for efficient neurotransmission and is involved in the formation of synaptic contacts. Three members of this gene family have been studied in detail and are estimated to generate over 3,000 variants through the use of two alternative promoters (alpha and beta) and extensive alternative splicing in each family member. Recently, a third promoter (gamma) was identified for this gene in the 3' region. Mutations in this gene are associated with Pitt-Hopkins-like syndrome-2 and may contribute to susceptibility to schizophrenia. [provided by RefSeq, Aug 2016]

Protein Families: Druggable Genome, Transmembrane

Protein Pathways: Cell adhesion molecules (CAMs)

Product images:



Coomassie blue staining of purified NRXN1 protein (Cat# [TP319376]). The protein was produced from HEK293T cells transfected with NRXN1 cDNA clone (Cat# [RC219376]) using MegaTran 2.0 (Cat# [TT210002]).