

Product datasheet for PH319375

LCK (NM_005356) Human Mass Spec Standard

Product data:

Product Type:	Mass Spec Standards
Description:	LCK MS Standard C13 and N15-labeled recombinant protein (NP_005347)
Species:	Human
Expression Host:	HEK293
Expression cDNA Clone or AA Sequence:	RC219375
Predicted MW:	57.8 kDa
Protein Sequence:	RC219375
Tag:	C-Myc/DDK
Purity:	> 80% as determined by SDS-PAGE and Coomassie blue staining
Concentration:	>0.05 µg/µL as determined by microplate BCA method
Labeling Method:	Labeled with [U- ¹³ C ₆ , ¹⁵ N ₄]-L-Arginine and [U- ¹³ C ₆ , ¹⁵ N ₂]-L-Lysine
Buffer:	25 mM Tris-HCl, 100 mM glycine, pH 7.3
Storage:	Store at -80°C. Avoid repeated freeze-thaw cycles.
Stability:	Stable for 3 months from receipt of products under proper storage and handling conditions.
RefSeq:	NP_005347
RefSeq Size:	2032
RefSeq ORF:	1527
Synonyms:	IMD22; LSK; p56lck; pp58lck; YT16
Locus ID:	3932
UniProt ID:	P06239 , A0A0S2Z3Y8
Cytogenetics:	1p35.2



[View online »](#)

Summary:

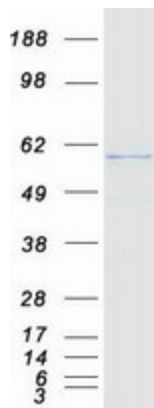
This gene is a member of the Src family of protein tyrosine kinases (PTKs). The encoded protein is a key signaling molecule in the selection and maturation of developing T-cells. It contains N-terminal sites for myristylation and palmylation, a PTK domain, and SH2 and SH3 domains which are involved in mediating protein-protein interactions with phosphotyrosine-containing and proline-rich motifs, respectively. The protein localizes to the plasma membrane and pericentrosomal vesicles, and binds to cell surface receptors, including CD4 and CD8, and other signaling molecules. Multiple alternatively spliced variants encoding different isoforms have been described. [provided by RefSeq, Aug 2016]

Protein Families:

Druggable Genome, Protein Kinase, Stem cell - Pluripotency

Protein Pathways:

Natural killer cell mediated cytotoxicity, Primary immunodeficiency, T cell receptor signaling pathway

Product images:

Coomassie blue staining of purified LCK protein (Cat# [TP319375]). The protein was produced from HEK293T cells transfected with LCK cDNA clone (Cat# [RC219375]) using MegaTran 2.0 (Cat# [TT210002]).