

Product datasheet for PH319370

MAP3K19 (NM_001018046) Human Mass Spec Standard

Product data:

| | |
|---------------------------------------|---|
| Product Type: | Mass Spec Standards |
| Description: | YSK4 MS Standard C13 and N15-labeled recombinant protein (NP_001018056) |
| Species: | Human |
| Expression Host: | HEK293 |
| Expression cDNA Clone or AA Sequence: | RC219370 |
| Predicted MW: | 57.5 kDa |
| Protein Sequence: | >RC219370 representing NM_001018046 Red=Cloning site Green=Tags(s) |

MSSMPKPERHAESLLDICHDTNSSPTDLMVTVKQNIIILQSI SRSEEFDQDGDGDCSHSTLVNEEEDPSGGR
QDWQPRTEGVEITVTFPRDVSPPEMSQEDLKEKNLINSLSQEWQAQAHAVSHPNEIETVELRKKKLTMRP
LVLQKEESSRELCNVNLGFLPRSCLELNISKSVTREDAPHFLKEQQRKSEEFSTSHMKYSGRSIKRHSS
GLRIYDREKFLISNEKKIFSENSLKSEEPILWTKGEILGKGAYGTVYCGLTSSQQLI AVKQVALDTSNK
LAAEKEYRKLQEEVDLLKALKHVNI VAYLGTCLQENTVSIFMEFVPGGSISSIINRFGLPEMVFKYTK
QILQGVAYLHENCVVHRDIKGNVMLMPTGI IKLIDFGCARRLAWAGLNGTHSDMLKSMHGTPYWMapev
INESGYGRKSDIWSIGCTVFEMATGKPPLASMDRMAAMFYIGAHRGLMPPLPDHFSENAADFVRMCLTRD
QHERPSALQLLKHSFLERSH

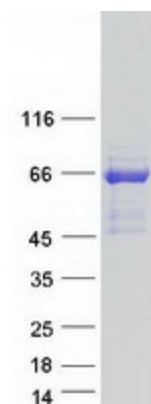
TRTRPLEQKLI SEEDLAANDILDYKDDDDKV

| | |
|------------------|--|
| Tag: | C-Myc/DDK |
| Purity: | > 80% as determined by SDS-PAGE and Coomassie blue staining |
| Concentration: | >0.05 µg/µL as determined by microplate BCA method |
| Labeling Method: | Labeled with [U- 13C6, 15N4]-L-Arginine and [U- 13C6, 15N2]-L-Lysine |
| Buffer: | 25 mM Tris-HCl, 100 mM glycine, pH 7.3 |
| Storage: | Store at -80°C. Avoid repeated freeze-thaw cycles. |
| Stability: | Stable for 3 months from receipt of products under proper storage and handling conditions. |
| RefSeq: | <u>NP_001018056</u> |
| RefSeq Size: | 1711 |
| RefSeq ORF: | 1530 |



[View online »](#)

| | |
|-------------------|----------------------------------|
| Synonyms: | RCK; YSK4 |
| Locus ID: | 80122 |
| UniProt ID: | Q56UN5 |
| Cytogenetics: | 2q21.3 |
| Protein Families: | Druggable Genome, Protein Kinase |

Product images:

Coomassie blue staining of purified MAP3K19 protein (Cat# [TP319370]). The protein was produced from HEK293T cells transfected with MAP3K19 cDNA clone (Cat# [RC219370]) using MegaTran 2.0 (Cat# [TT210002]).