

Product datasheet for PH319359

CD39 (ENTPD1) (NM_001776) Human Mass Spec Standard

Product data:

Product Type:	Mass Spec Standards
Description:	ENTPD1 MS Standard C13 and N15-labeled recombinant protein (NP_001767)
Species:	Human
Expression Host:	HEK293
Expression cDNA Clone or AA Sequence:	RC219359
Predicted MW:	58 kDa
Protein Sequence:	>RC219359 protein sequence Red=Cloning site Green=Tags(s)

MEDTKESNVKTFCSKNILAILGFSSIIAVIALLAVGLTQNKALPENVKYGIVLDAGSSHTSLYIYKWPAE
KENDTGVVHQVEECRVKGPISKFVQKVNEIGIYLTDCMERAREVIPRSQHQETPVYLGATAGMRLLRME
SEELADRVLDVVERLSNYPDFQGARIIITGQEEGAYGWITINYLLGKFSQKTRWF SIVPYETNNQETFG
ALDLGGASTQVTFVQNQTIESPDNALQFRLYKGDYNNVYTHSFLCYGKDQALWQKLAKDIQVASNEILRD
PCFHGPGYKVVNVDLYKTPCTKRFEMTLPFQQFEIQGIGNYQQCHQSILELFNTSYCPYSQCAFNGIFL
PPLQGDGAFSAFYFVMKFLNLTSEKVSQEKVTEMMKKFCAQPWEEIKTSYAGVKEKYLSEYCFSGTYIL
SLLLQGYHFTADSWEHIFIGKIQGSDAGWTLGYMLNLTNMIPAEQPLSTPLSHSTYVFLMVLFSLVLF
VAIIGLLIFHKPSYFWKDMV

TRTRPLEQKLI SEEDLAANDILDYKDDDDKV

Tag:	C-Myc/DDK
Purity:	> 80% as determined by SDS-PAGE and Coomassie blue staining
Concentration:	>0.05 µg/µL as determined by microplate BCA method
Labeling Method:	Labeled with [U- 13C6, 15N4]-L-Arginine and [U- 13C6, 15N2]-L-Lysine
Buffer:	25 mM Tris-HCl, 100 mM glycine, pH 7.3
Storage:	Store at -80°C. Avoid repeated freeze-thaw cycles.
Stability:	Stable for 3 months from receipt of products under proper storage and handling conditions.
RefSeq:	<u>NP_001767</u>
RefSeq Size:	12493
RefSeq ORF:	1533



[View online »](#)

Synonyms: ATPDase; CD39; NTPDase-1; SPG64

Locus ID: 953

UniProt ID: [P49961](#)

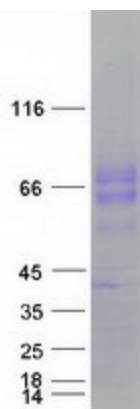
Cytogenetics: 10q24.1

Summary: The protein encoded by this gene is a plasma membrane protein that hydrolyzes extracellular ATP and ADP to AMP. Inhibition of this protein's activity may confer anticancer benefits. Several transcript variants encoding different isoforms have been found for this gene. [provided by RefSeq, Aug 2015]

Protein Families: Transmembrane

Protein Pathways: Purine metabolism, Pyrimidine metabolism

Product images:



Coomassie blue staining of purified ENTPD1 protein (Cat# [TP319359]). The protein was produced from HEK293T cells transfected with ENTPD1 cDNA clone (Cat# [RC219359]) using MegaTran 2.0 (Cat# [TT210002]).