

Product datasheet for PH319337

CCDC46 (CEP112) (NM_001037325) Human Mass Spec Standard

Product data:

Product Type:	Mass Spec Standards
Description:	CCDC46 MS Standard C13 and N15-labeled recombinant protein (NP_001032402)
Species:	Human
Expression Host:	HEK293
Expression cDNA Clone or AA Sequence:	RC219337
Predicted MW:	24.4 kDa
Protein Sequence:	>RC219337 representing NM_001037325 Red =Cloning site Green =Tags(s) MWASLSLDHPSAKENQALRLIEMREENGVPKTEQAGSLKPLRDTGKSNLKEKKANSKPKQIEKEYTQKL AKSSQIIAELQTTISLKEENSQQQLAAERRLQDVRQKFEDEKKQLIRDNDQAIVLQDELENRSNQVRC AEKKLQHKELSEQEITYIRQEYETKLGKMPASLRQELEDTISLKSQVNFQKRASILQEELTTYQGR R TRTRPLEQKLISEEDLAANDILDYKDDDDKV
Tag:	C-Myc/DDK
Purity:	> 80% as determined by SDS-PAGE and Coomassie blue staining
Concentration:	>0.05 µg/µL as determined by microplate BCA method
Labeling Method:	Labeled with [U- ¹³ C ₆ , ¹⁵ N ₄]-L-Arginine and [U- ¹³ C ₆ , ¹⁵ N ₂]-L-Lysine
Buffer:	25 mM Tris-HCl, 100 mM glycine, pH 7.3
Storage:	Store at -80°C. Avoid repeated freeze-thaw cycles.
Stability:	Stable for 3 months from receipt of products under proper storage and handling conditions.
RefSeq:	NP_001032402
RefSeq Size:	1258
RefSeq ORF:	633
Synonyms:	CCDC46; MACOCO; SPGF44
Locus ID:	201134
UniProt ID:	Q8N8E3

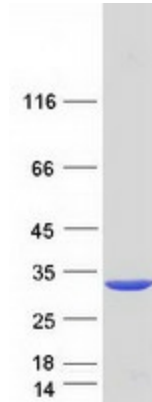


[View online »](#)

Cytogenetics: 17q24.1

Summary: This gene encodes a coiled-coil domain containing protein that belongs to the cell division control protein 42 effector protein family. In neurons, it localizes to the cytoplasm of dendrites and is also enriched in the nucleus where it interacts with the RNA polymerase III transcriptional repressor Maf1 to regulate gamma-aminobutyric acid A receptor surface expression. In addition, the protein has been identified as a component of the human centrosome. Alternative splicing results in multiple transcript variants. [provided by RefSeq, Nov 2014]

Product images:



Coomassie blue staining of purified CEP112 protein (Cat# [TP319337]). The protein was produced from HEK293T cells transfected with CEP112 cDNA clone (Cat# [RC219337]) using MegaTran 2.0 (Cat# [TT210002]).