

Product datasheet for PH319328

IL36 alpha (IL36A) (NM_014440) Human Mass Spec Standard

Product data:

Product Type:	Mass Spec Standards
Description:	IL1F6 MS Standard C13 and N15-labeled recombinant protein (NP_055255)
Species:	Human
Expression Host:	HEK293
Expression cDNA Clone or AA Sequence:	RC219328
Predicted MW:	17.7 kDa
Protein Sequence:	>Peptide sequence encoded by RC219328 Blue=ORF Red=Cloning site Green=Tag(s) MEKALKIDTPQRGSIQDINHRVWVLQDQTLIAVPRKDRMSPVTIALISCRHVETLEKDRGNPIYLLGLNG LNLCLMCAKVGDPQLQLKEKDIMDLYNQPEPVKSFLFYHSQSGRNSTFESVAFPGWFIASVSEGGCPL ILTQELGKANTTDFGLTMLF TRTRPLEQKLISEEDLAANDILDYKDDDDKV Recombinant protein using RC219328 also available, TP319328M
Tag:	C-Myc/DDK
Purity:	> 80% as determined by SDS-PAGE and Coomassie blue staining
Concentration:	>0.05 µg/µL as determined by microplate BCA method
Labeling Method:	Labeled with [U- ¹³ C ₆ , ¹⁵ N ₄]-L-Arginine and [U- ¹³ C ₆ , ¹⁵ N ₂]-L-Lysine
Buffer:	25 mM Tris-HCl, 100 mM glycine, pH 7.3
Storage:	Store at -80°C. Avoid repeated freeze-thaw cycles.
Stability:	Stable for 3 months from receipt of products under proper storage and handling conditions.
RefSeq:	NP_055255
RefSeq Size:	477
RefSeq ORF:	474
Synonyms:	FIL1; FIL1(EPSILON); FIL1E; IL-1F6; IL1(EPSILON); IL1F6
Locus ID:	27179
UniProt ID:	Q9UHA7



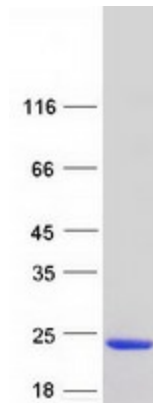
[View online »](#)

Cytogenetics: 2q14.1

Summary: The protein encoded by this gene is a cytokine that can activate NF-kappa-B and MAPK signaling pathways to generate an inflammatory response. The encoded protein functions primarily in skin and demonstrates increased expression in psoriasis. In addition, decreased expression of this gene has been linked to a poor prognosis in both hepatocellular carcinoma and colorectal cancer patients. [provided by RefSeq, Nov 2015]

Protein Families: Druggable Genome, Secreted Protein

Product images:



Coomassie blue staining of purified IL36A protein (Cat# [TP319328]). The protein was produced from HEK293T cells transfected with IL36A cDNA clone (Cat# [RC219328]) using MegaTran 2.0 (Cat# [TT210002]).