

Product datasheet for PH319231

Thyrotropin Releasing Hormone (TRH) (NM_007117) Human Mass Spec Standard

Product data:

Product Type:	Mass Spec Standards
Description:	TRH MS Standard C13 and N15-labeled recombinant protein (NP_009048)
Species:	Human
Expression Host:	HEK293
Expression cDNA Clone or AA Sequence:	RC219231
Predicted MW:	27.4 kDa
Protein Sequence:	>RC219231 protein sequence Red =Cloning site Green =Tags(s) MPGPWLLLALALTLNLTGVPGGRAQPEAAQQEAVTAAEHPGLDDFLRQVERLLFLRENIQRLQGDQGEHS ASQIFQSDWL SKRQHPGKREEEEEEGVEEEEEEGGAVGPHKRQHPGRREDEASWSVDVTQHKRQHPGRR SPWLAYAVPKRQHPGRRADPKAQRSWEEEEEEEEEREEDLMPEKRQHPGKRALGGPCGPQAGYAGQLLL GLLDDLRSQGAEEKRQHPGRRAAWVREPLEE TR TRPLE QKLI SEEDLAANDILDYKDDDDK V
Tag:	C-Myc/DDK
Purity:	> 80% as determined by SDS-PAGE and Coomassie blue staining
Concentration:	>0.05 µg/µL as determined by microplate BCA method
Labeling Method:	Labeled with [U- ¹³ C ₆ , ¹⁵ N ₄]-L-Arginine and [U- ¹³ C ₆ , ¹⁵ N ₂]-L-Lysine
Buffer:	25 mM Tris-HCl, 100 mM glycine, pH 7.3
Storage:	Store at -80°C. Avoid repeated freeze-thaw cycles.
Stability:	Stable for 3 months from receipt of products under proper storage and handling conditions.
RefSeq:	<u>NP_009048</u>
RefSeq Size:	1890
RefSeq ORF:	726
Synonyms:	Pro-TRH; TRF
Locus ID:	7200
UniProt ID:	<u>P20396</u>



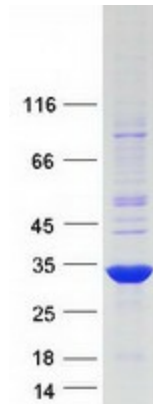
[View online »](#)

Cytogenetics: 3q22.1

Summary: This gene encodes a member of the thyrotropin-releasing hormone family. Cleavage of the encoded proprotein releases mature thyrotropin-releasing hormone, which is a tripeptide hypothalamic regulatory hormone. The human proprotein contains six thyrotropin-releasing hormone tripeptides. Thyrotropin-releasing hormone is involved in the regulation and release of thyroid-stimulating hormone, as well as prolactin. Deficiency of this hormone has been associated with hypothalamic hypothyroidism. [provided by RefSeq, May 2013]

Protein Families: Druggable Genome, Secreted Protein

Product images:



Coomassie blue staining of purified TRH protein (Cat# [TP319231]). The protein was produced from HEK293T cells transfected with TRH cDNA clone (Cat# [RC219231]) using MegaTran 2.0 (Cat# [TT210002]).