

Product datasheet for PH319227

PRPS2 (NM_001039091) Human Mass Spec Standard

Product data:

Product Type:	Mass Spec Standards
Description:	PRPS2 MS Standard C13 and N15-labeled recombinant protein (NP_001034180)
Species:	Human
Expression Host:	HEK293
Expression cDNA Clone or AA Sequence:	RC219227
Predicted MW:	34.9 kDa
Protein Sequence:	>RC219227 representing NM_001039091 Red=Cloning site Green=Tags(s) MPNIVLFSGSSHQDL.SQRVADRLGLELGKVVTKKFSNQETSVEIGESVRGEDVYIIQSGCGEINDLMEL LIMINACKIASSSRVTAVIPCFPYARQDKKDKVGESRAPISAKLVANMLSVAGADHIITMDLHASQIQGF FDIPVDNLYAEPAVLQWIRENIAEWKNCIIVSPDAGGAKRVTSIADRLNVEFALIHKERRKANEVDRMVL VGDVKDRVAILVDDMADTCGTICHAADKLLSAGATKVYAILTHGIFSGPAISRINNAAFEAVVVTNTIPQ EDKMKHCTKIQVIDISMILAEAIRRTHNGESVSYLFSHVPL TRTRPLEQKLISEEDLAANDILDYKDDDDKV
Tag:	C-Myc/DDK
Purity:	> 80% as determined by SDS-PAGE and Coomassie blue staining
Concentration:	>0.05 µg/µL as determined by microplate BCA method
Labeling Method:	Labeled with [U- ¹³ C ₆ , ¹⁵ N ₄]-L-Arginine and [U- ¹³ C ₆ , ¹⁵ N ₂]-L-Lysine
Buffer:	25 mM Tris-HCl, 100 mM glycine, pH 7.3
Storage:	Store at -80°C. Avoid repeated freeze-thaw cycles.
Stability:	Stable for 3 months from receipt of products under proper storage and handling conditions.
RefSeq:	NP_001034180
RefSeq Size:	2518
RefSeq ORF:	963
Synonyms:	PRSI
Locus ID:	5634



[View online »](#)

UniProt ID: [P11908](#), [A0A140VK41](#)

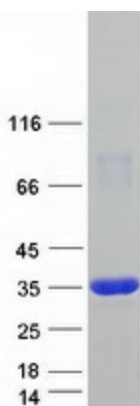
Cytogenetics: Xp22.2

Summary: This gene encodes a phosphoribosyl pyrophosphate synthetase that plays a central role in the synthesis of purines and pyrimidines. The encoded protein catalyzes the synthesis of 5-phosphoribosyl 1-pyrophosphate from ATP and D-ribose 5-phosphate. Alternate splicing results in multiple transcript variants. [provided by RefSeq, Mar 2010]

Protein Families: Druggable Genome

Protein Pathways: Metabolic pathways, Pentose phosphate pathway, Purine metabolism

Product images:



Coomassie blue staining of purified PRPS2 protein (Cat# [TP319227]). The protein was produced from HEK293T cells transfected with PRPS2 cDNA clone (Cat# [RC219227]) using MegaTran 2.0 (Cat# [TT210002]).