

Product datasheet for PH319226

ASPHD1 (NM_181718) Human Mass Spec Standard

Product data:

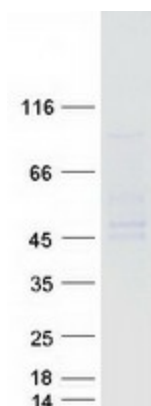
Product Type:	Mass Spec Standards
Description:	ASPHD1 MS Standard C13 and N15-labeled recombinant protein (NP_859069)
Species:	Human
Expression Host:	HEK293
Expression cDNA Clone or AA Sequence:	RC219226
Predicted MW:	41.1 kDa
Protein Sequence:	>RC219226 protein sequence Red=Cloning site Green=Tags(s) MKEGRGSFSVERGPRKERETAQSGMWKGNSPAGSQGAAMEGTGGELGGQGNWGPEDAPGLLARASLIMLP WPLPLASSALTLLFGALTSFLWYCYRLGSQDMQALGAGSRAGGVRGGPVGCSEAGGPPSPGGPDGEGP RTEGLVSRRLRAYARRYSWAGMGRVRRAAQGGPGPRGPGVLSGIQRPGLLFLPDLPSAPFVPRDAQRHVDV ELLESSFPAILRDFGAVSWDFSGTTPPPRGWSPPLAPGCYQLLLYQAGRCQPSNCRRCPGAYRALRGLRS FMSANTFGNAGFSVLLPGARLEGRGPTNARVRCHLGLKIPPGCELVVGGEPCQWAEHGCLLVDDSFLLHT VAHNGSPEDGPRVVFIVDLWHPNVAGAERQALDFVFPDP TRTRPLEQKLISEEDLAANDILDYKDDDDKV
Tag:	C-Myc/DDK
Purity:	> 80% as determined by SDS-PAGE and Coomassie blue staining
Concentration:	>0.05 µg/µL as determined by microplate BCA method
Labeling Method:	Labeled with [U- ¹³ C ₆ , ¹⁵ N ₄]-L-Arginine and [U- ¹³ C ₆ , ¹⁵ N ₂]-L-Lysine
Buffer:	25 mM Tris-HCl, 100 mM glycine, pH 7.3
Storage:	Store at -80°C. Avoid repeated freeze-thaw cycles.
Stability:	Stable for 3 months from receipt of products under proper storage and handling conditions.
RefSeq:	<u>NP_859069</u>
RefSeq Size:	1562
RefSeq ORF:	1170
Locus ID:	253982
UniProt ID:	<u>Q5U4P2</u>



[View online »](#)

Cytogenetics: 16p11.2

Product images:



Coomassie blue staining of purified ASPHD1 protein (Cat# [TP319226]). The protein was produced from HEK293T cells transfected with ASPHD1 cDNA clone (Cat# [RC219226]) using MegaTran 2.0 (Cat# [TT210002]).