

Product datasheet for PH319220

SHF (NM_138356) Human Mass Spec Standard

Product data:

Product Type:	Mass Spec Standards
Description:	SHF MS Standard C13 and N15-labeled recombinant protein (NP_612365)
Species:	Human
Expression Host:	HEK293
Expression cDNA Clone or AA Sequence:	RC219220
Predicted MW:	46.6 kDa
Protein Sequence:	>RC219220 representing NM_138356 Red=Cloning site Green=Tags(s) MQQEGGPVRSAPCRTGTLEGSRQSPGHRKRASPKGSLSSAQPHSWMLTPSPLNSHCAHREPISSSPQPV ANGPKQKKSNWRSTTRLRIIRLRDRLEPRPLAILEDYADPFVQETGEGSAGASGAPEKVPENDGYMEP YEAQKMMAEIRGSKETATQPLPLYDTPYEPEEDGATPEGEGAPWPRESRLPEDDERPPEEYDQPWEWKKE RISKAFVADIKVIKDLWPPVQGLDSSPSLPDGDIDISGPASPLPEPSLEDSSAQFEGPEKSCLSPGRE EKGRLPPRLSAGNPKSAKPLSMEPSSPLGEWTDPALPLENQVWYHGAIISRTDAENLLRLCKEASYLVVRS ETSKNDFSLSLKSSQGFMMHKLVRTKEHKYVLGQNSPPFSSVPEIVHHYASRKLPIKGAEHMSLLYPVAI RTL TRTRPLEQKLISEEDLAANDILDYKDDDDKV
Tag:	C-Myc/DDK
Purity:	> 80% as determined by SDS-PAGE and Coomassie blue staining
Concentration:	>0.05 µg/µL as determined by microplate BCA method
Labeling Method:	Labeled with [U- ¹³ C ₆ , ¹⁵ N ₄]-L-Arginine and [U- ¹³ C ₆ , ¹⁵ N ₂]-L-Lysine
Buffer:	25 mM Tris-HCl, 100 mM glycine, pH 7.3
Storage:	Store at -80°C. Avoid repeated freeze-thaw cycles.
Stability:	Stable for 3 months from receipt of products under proper storage and handling conditions.
RefSeq:	<u>NP_612365</u>
RefSeq Size:	2517
RefSeq ORF:	1269
Locus ID:	90525

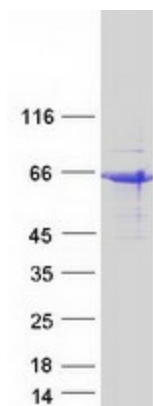


[View online »](#)

UniProt ID: [B3KTY1](#)

Cytogenetics: 15q21.1

Product images:



Coomassie blue staining of purified SHF protein (Cat# [TP319220]). The protein was produced from HEK293T cells transfected with SHF cDNA clone (Cat# [RC219220]) using MegaTran 2.0 (Cat# [TT210002]).