

Product datasheet for PH319216

C4BPB (NM_001017367) Human Mass Spec Standard

Product data:

Product Type:	Mass Spec Standards
Description:	C4BPB MS Standard C13 and N15-labeled recombinant protein (NP_001017367)
Species:	Human
Expression Host:	HEK293
Expression cDNA Clone or AA Sequence:	RC219216
Predicted MW:	28.3 kDa
Protein Sequence:	>RC219216 protein sequence Red =Cloning site Green =Tags(s)
	MFFWCACCLMVAWRVVSASDEHCPELPPVDNSIFVAKEVEGQILGTYYVCIKGYHLVGKKTLCNASKEWDN TTTECRLGHCPDPVLVNGEFSSSGPVNVSDKITFMCNDHYILKGSNRSQCLEDHTWAPPFPICKSRDCDP PGNPVHGYPFEGNNFTLGSTISYYCEDRYLVGVQEQQCVDGEWSSALPVCKLIQEAPKPECEKALLAFQE SKNLCEAMENFMQQLKESGMTMEELKYSLELKKAEKAKLL
	TR TRPLEQ KL ISEEDLAANDILDYKDDDDKV
Tag:	C-Myc/DDK
Purity:	> 80% as determined by SDS-PAGE and Coomassie blue staining
Concentration:	>0.05 µg/µL as determined by microplate BCA method
Labeling Method:	Labeled with [U- ¹³ C ₆ , ¹⁵ N ₄]-L-Arginine and [U- ¹³ C ₆ , ¹⁵ N ₂]-L-Lysine
Buffer:	25 mM Tris-HCl, 100 mM glycine, pH 7.3
Storage:	Store at -80°C. Avoid repeated freeze-thaw cycles.
Stability:	Stable for 3 months from receipt of products under proper storage and handling conditions.
RefSeq:	<u>NP_001017367</u>
RefSeq Size:	967
RefSeq ORF:	812
Synonyms:	C4BP
Locus ID:	725
UniProt ID:	<u>P20851</u>



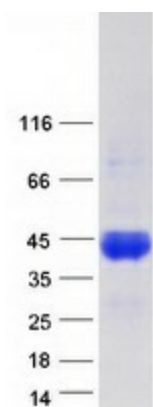
[View online »](#)

Cytogenetics: 1q32.1

Summary: This gene encodes a member of a superfamily of proteins composed predominantly of tandemly arrayed short consensus repeats of approximately 60 amino acids. A single, unique beta-chain encoded by this gene assembles with seven identical alpha-chains into the predominant isoform of C4b-binding protein, a multimeric protein that controls activation of the complement cascade through the classical pathway. C4b-binding protein has a regulatory role in the coagulation system also, mediated through the beta-chain binding of protein S, a vitamin K-dependent protein that serves as a cofactor of activated protein C. The genes encoding both alpha and beta chains are located adjacent to each other on human chromosome 1 in the regulator of complement activation gene cluster. Alternative splicing gives rise to multiple transcript variants. [provided by RefSeq, Jul 2008]

Protein Pathways: Complement and coagulation cascades

Product images:



Coomassie blue staining of purified C4BPB protein (Cat# [TP319216]). The protein was produced from HEK293T cells transfected with C4BPB cDNA clone (Cat# [RC219216]) using MegaTran 2.0 (Cat# [TT210002]).