

Product datasheet for PH319213

SP6 (NM_199262) Human Mass Spec Standard

Product data:

Product Type:	Mass Spec Standards
Description:	SP6 MS Standard C13 and N15-labeled recombinant protein (NP_954871)
Species:	Human
Expression Host:	HEK293
Expression cDNA Clone or AA Sequence:	RC219213
Predicted MW:	39.8 kDa
Protein Sequence:	>RC219213 protein sequence Red =Cloning site Green =Tags(s) MLTAVCGSLGSQHTEAPHASPPRLDLQPLQTYQGHTSPEAGDYPSPLQPGELQSLPLGPEVDFSQGYELP GASSRVTCELDLESDSPLAPGPFKLLQPDMSHHYESWFRPHTPGAEDGSWDLHPGTSWMDLPHTQGALT SPGHGALQAGLGGYVGDHQLCAPPHPHAHLLPAAGGQHLLGPPDGAKALEVAAPESQGLDSSLDGAA RPKGSRRSVPRSSQTVCRPCNACLEAERLGAPCGPDGGKKKHLHNCHIPGCGKAYAKTSHLKAHLRWHS DRPFVCNWLFCGKRFTRSDELQRHLQHTGTGKFFCAVCSRVFMRSDHLAKHMKTHEGAKEEAAGAASGE GKAGGAVEPPGGKKGKREAEAGSVAPSN TRTRPLEQKLI SEEDLAANDILDYKDDDDKV
Tag:	C-Myc/DDK
Purity:	> 80% as determined by SDS-PAGE and Coomassie blue staining
Concentration:	>0.05 µg/µL as determined by microplate BCA method
Labeling Method:	Labeled with [U- ¹³ C ₆ , ¹⁵ N ₄]-L-Arginine and [U- ¹³ C ₆ , ¹⁵ N ₂]-L-Lysine
Buffer:	25 mM Tris-HCl, 100 mM glycine, pH 7.3
Storage:	Store at -80°C. Avoid repeated freeze-thaw cycles.
Stability:	Stable for 3 months from receipt of products under proper storage and handling conditions.
RefSeq:	<u>NP_954871</u>
RefSeq Size:	3794
RefSeq ORF:	1128
Synonyms:	EPFN; EPIPROFIN; KLF14
Locus ID:	80320



[View online »](#)

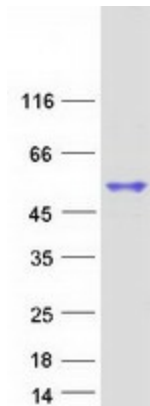
UniProt ID: [Q3SY56](#), [B3KXP2](#)

Cytogenetics: 17q21.32

Summary: SP6 belongs to a family of transcription factors that contain 3 classical zinc finger DNA-binding domains consisting of a zinc atom tetrahedrally coordinated by 2 cysteines and 2 histidines (C2H2 motif). These transcription factors bind to GC-rich sequences and related GT and CACCC boxes (Schoy et al., 2000 [PubMed 11087666]).[supplied by OMIM, Mar 2008]

Protein Families: Transcription Factors

Product images:



Coomassie blue staining of purified SP6 protein (Cat# [TP319213]). The protein was produced from HEK293T cells transfected with SP6 cDNA clone (Cat# [RC219213]) using MegaTran 2.0 (Cat# [TT210002]).