

Product datasheet for PH319200

EHMT2/G9A (EHMT2) (NM_025256) Human Mass Spec Standard

Product data:

Product Type:	Mass Spec Standards
Description:	EHMT2 MS Standard C13 and N15-labeled recombinant protein (NP_079532)
Species:	Human
Expression Host:	HEK293
Expression cDNA Clone or AA Sequence:	RC219200
Predicted MW:	128.8 kDa
Protein Sequence:	>RC219200 representing NM_025256 Red=Cloning site Green=Tags(s)

MAAAGAAAAAAEAGEAPAEMGALLLEKETRGATERVHGS LGDTPRSEETLPKANPDSLEPAGPSSPASV
TVTVGDEGADTPVGATPLIGDESENLEGDGLRGRILLGHATKSFSPSPKGGSCPSRAKMSMTGAGKS
PPSVQSLAMRLLSMPGAQGAAAAGSEPPPATTSPEGQPKVHRARKTMSKPGNGQPPVPEKRPPEIQHFRM
SDDVHSLGKVTSDLAKRRKLNSSGGGLSEELGSARRSGEVTLTKGDPGSLEEWETVVGDDFSLYYDSYSVD
ERVDSDSKSEVEALTEQLSEEEEEEEEEEEEEEEEEEEEEDEESGNQSDRSGSSGRRKAKKKWRKDS
PWVKPSRKRKRREPPRAKEPRGVSNDTSSLETERGFEELPLCSCRMEAPKIDRISERAGHKCMATESVDG
ELSGCNAAILKRETMRPSRVALMVLCETHRARMVKHHCCPGCYFCTAGTFLECHPDFRVAHRFHKACV
SQLNGMVFCPHCGEDASEAQEVTIPRGDVTTPAGTAAPAPPPLSQDVPGRADTSQPSARMRGHGEP
PCDPLADTIDSSGPSLTLPNGGCLSAVGLPLGPGREALEKALVIQESERRKLRFRPQLYLSVKQGELQ
KVILMLLDNLDPNFQSDQSKRTPHAAAQKGSVEICHVLLQAGANINAVDKQQRTPLEAVVNNHLEVA
RYMVQRGGCVYSKEEDGSTCLHHAAKIGNLEMVSLLLSTGQVDVNAQDSGGWTPIIWAAEHKHIEVIRML
LTRGADVTLTDNEENICLHWASFTGSAIAEVLNARCDLHAVNYHGDTPLHIAARES YHDCVLLFLSRG
ANPELRNKEGDTAWDLTPERSDVWFALQLNRKRLRGLVGNRAIRTEKIIICRDVARGYENVPICVNGVDGE
PCPEDYKYISENCETSTMNIDRNIHLQHCTCVDDCSSNCLCGQLSIRCWYDKDGRLLQEFNKIEPPLI
FECNQACSCWRNCKNRVVQSGIKVRLQLYRTAKMGWVRLQTIPQGTFFICEYVGE LISDAEADVREDD
YLFDLDNKDGEVYCIDARYYGNISRFINHLCDPNIIPVRVFMHLHQDLRFPRIAFFSSRDIRTGEELGFDY
GDRFWDIKSKYFTCCGSEKCKHSAEIALEQSRLARLDPHPELLPELGLSLPPVNT

TRTRPLEQKLI SEEDLAANDILDYKDDDDKV

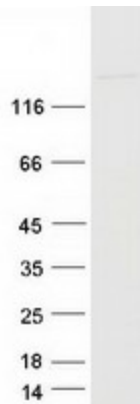
Tag:	C-Myc/DDK
Purity:	> 80% as determined by SDS-PAGE and Coomassie blue staining
Concentration:	>0.05 µg/µL as determined by microplate BCA method
Labeling Method:	Labeled with [U- 13C6, 15N4]-L-Arginine and [U- 13C6, 15N2]-L-Lysine
Buffer:	25 mM Tris-HCl, 100 mM glycine, pH 7.3



[View online »](#)

Storage:	Store at -80°C. Avoid repeated freeze-thaw cycles.
Stability:	Stable for 3 months from receipt of products under proper storage and handling conditions.
RefSeq:	NP_079532
RefSeq Size:	3892
RefSeq ORF:	3528
Synonyms:	BAT8; C6orf30; G9A; GAT8; KMT1C; NG36
Locus ID:	10919
UniProt ID:	Q96KQ7
Cytogenetics:	6p21.33
Summary:	This gene encodes a methyltransferase that methylates lysine residues of histone H3. Methylation of H3 at lysine 9 by this protein results in recruitment of additional epigenetic regulators and repression of transcription. This gene was initially thought to be two different genes, NG36 and G9a, adjacent to each other in the HLA locus. Alternative splicing results in multiple transcript variants. [provided by RefSeq, Jan 2016]
Protein Families:	Druggable Genome
Protein Pathways:	Lysine degradation

Product images:



Coomassie blue staining of purified EHMT2 protein (Cat# [TP319200]). The protein was produced from HEK293T cells transfected with EHMT2 cDNA clone (Cat# [RC219200]) using MegaTran 2.0 (Cat# [TT210002]).