

Product datasheet for PH319147

RASGRF1 (NM_002891) Human Mass Spec Standard

Product data:

Product Type:	Mass Spec Standards
Description:	RASGRF1 MS Standard C13 and N15-labeled recombinant protein (NP_002882)
Species:	Human
Expression Host:	HEK293
Expression cDNA Clone or AA Sequence:	RC219147
Predicted MW:	145.1 kDa
Protein Sequence:	>RC219147 representing NM_002891 Red=Cloning site Green=Tags(s)

MQKGIRLNDGHVASLGLLARKDGTTRKGYLSKRSSDNTKWQTKWFALLQNLLFYFESDSSSRPSGLYLLEG
CVCDRAPSPKPALSAKEPLEKQHYFTVNFVSHENQKALELRTEDAKDCDEWVAIAHASYRTLATEHEALM
QKYLHLLQIVETEKTVAKQLRQIEDGEIEIERLKAIEITSLLDNERIQSTQTVAPNDESDIKKIKKVQ
SFLRGWLCRRKWKTIQDYIRSPHADSMRKNQVVFVSMLEAEAEYVQQLHILVNNFLRPLRMAASSKKPP
ITHDDVSSIFLNSETIMFLHQIFYQGLKARISSWPTLVADLFDILLPMLNIYQEFVRNHQYSLQILAHC
KQNRDFDKLLKHYEAKPDCEERTLETFLTYPMFQIPRYILTHELLAHTPHEHVERNSLDYAKSKLEELS
RIMHDEVSETENIRKNLAIERMIIEGCEILLDTSQTFVRQGSLLIQVPMSEKGGKITRGRGLSLKKEGER
QCFLFSKHLIICTRGSGGKLHLTKNGVISLIDCTLLEPESTEEAAKGGQDIDHLDKIGVEPKDPPF
TVILVASSRQEKAAWTSDISQCVDNIRCNGLMMNAFEENSQVTPQMIIKRTREGTREAEMSRSDASLYCD
DVDIRFSKTMNSCKVLQIRYASVERLLERLTDLRFLSIDFLNTFLHSYRVFTTAIVVLDKLIITIKKPI
AIPARWLRSLELLFASGQNNKLLYGEPPKSPRATRKFSSPPPLSITKTSSPSRRRKLSLNIPITGGKAL
DLAALSCNSNGYTSMYSAMPFSKATLDTSKLYVSSSFTNKIPDEGDTTPEKPEDPSALSQKSSSEVSMRE
ESDIDQNQSDGDTETSPKSPPTPKSVKNKNSSEFPLFSYNNGVVMTSCRELDNRSALSAASAFAIAT
AGANEGTPNKEKYRRMSLASAGFPDQNRNGDKEFVIRRAATNRVLNVLRHVWSKHSQDFETNDELKCKVI
GFLEEVMDPELLTQERKAAANIIRTLTQEDPGDNQITLEEITQMAEGVKAEPFENHSALEIAEQLTLLD
HLVFKKIPYEEFFGQGWMLKLEKNERTPYIMKTTKHFNDISNLIASEIIRNEDINARVSAIEKWAVADIC
RCLHNYNAVLEITSSMNRSAIFRLKKTWLVKSKQTKALIDKLQKLVSEGRFKNLREALKNCDDPPCVPYL
GMYLTDLAFIEEGTPNYTEDGLVNFSKMRMISHIIREIRFQQTAYKIEHQAKVTQYLLDQSFVMDEESL
YESSLRIEPLPT

TRTRPLEQKLISEEDLAANDILDYKDDDDKV

Tag:	C-Myc/DDK
Purity:	> 80% as determined by SDS-PAGE and Coomassie blue staining
Concentration:	>0.05 µg/µL as determined by microplate BCA method



[View online »](#)

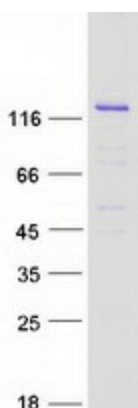
Labeling Method:	Labeled with [U- ¹³ C ₆ , ¹⁵ N ₄]-L-Arginine and [U- ¹³ C ₆ , ¹⁵ N ₂]-L-Lysine
Buffer:	25 mM Tris-HCl, 100 mM glycine, pH 7.3
Storage:	Store at -80°C. Avoid repeated freeze-thaw cycles.
Stability:	Stable for 3 months from receipt of products under proper storage and handling conditions.
RefSeq:	NP_002882
RefSeq Size:	4022
RefSeq ORF:	3819
Synonyms:	CDC25; CDC25L; GNRP; GRF1; GRF55; H-GRF55; PP13187; ras-GRF1
Locus ID:	5923
UniProt ID:	Q13972 , A8K270
Cytogenetics:	15q25.1

Summary: The protein encoded by this gene is a guanine nucleotide exchange factor (GEF) similar to the *Saccharomyces cerevisiae* CDC25 gene product. Functional analysis has demonstrated that this protein stimulates the dissociation of GDP from RAS protein. The studies of the similar gene in mouse suggested that the Ras-GEF activity of this protein in brain can be activated by Ca²⁺ influx, muscarinic receptors, and G protein beta-gamma subunit. Mouse studies also indicated that the Ras-GEF signaling pathway mediated by this protein may be important for long-term memory. Alternatively spliced transcript variants encoding distinct isoforms have been reported. [provided by RefSeq, Mar 2009]

Protein Families: Druggable Genome

Protein Pathways: Focal adhesion, MAPK signaling pathway

Product images:



Coomassie blue staining of purified RASGRF1 protein (Cat# [TP319147]). The protein was produced from HEK293T cells transfected with RASGRF1 cDNA clone (Cat# [RC219147]) using MegaTran 2.0 (Cat# [TT210002]).