

Product datasheet for PH319106

USF1 (NM_207005) Human Mass Spec Standard

Product data:

Product Type:	Mass Spec Standards
Description:	USF1 MS Standard C13 and N15-labeled recombinant protein (NP_996888)
Species:	Human
Expression Host:	HEK293
Expression cDNA Clone or AA Sequence:	RC219106
Predicted MW:	33.5 kDa
Protein Sequence:	>RC219106 protein sequence Red=Cloning site Green=Tags(s) MKGQQKTAEETEGTVQIQEGAVATGEDPTSVAIASIQSAATFPDPNVKYVFRTEGGQVMYRVIQVSEGLD LDGQTEGTGAISGYPATQSMQAVIQGAFTSDDAVDTEGTAAETHYTFPSTAVGDGAGGTTSGSTAAV TTQGSEALLGQATPPGTGQFFVMMSPQEVLLQGGSQRSIAPRTHPYSPKSEAPRTTRDEKRRRAQHNEVERR RRDKINNWIVQLSKIIPDCSMESTKSGQSKGGILSKACDYIQELRQSNHRLSEELQGLDQLQLDNDVLRQ QVEDLKNKNLLLRAQLRHHGLEVVIKNDSN TRTRPLEQKLISEEDLAANDILDYKDDDDKV
Tag:	C-Myc/DDK
Purity:	> 80% as determined by SDS-PAGE and Coomassie blue staining
Concentration:	>0.05 µg/µL as determined by microplate BCA method
Labeling Method:	Labeled with [U- ¹³ C ₆ , ¹⁵ N ₄]-L-Arginine and [U- ¹³ C ₆ , ¹⁵ N ₂]-L-Lysine
Buffer:	25 mM Tris-HCl, 100 mM glycine, pH 7.3
Storage:	Store at -80°C. Avoid repeated freeze-thaw cycles.
Stability:	Stable for 3 months from receipt of products under proper storage and handling conditions.
RefSeq:	NP_996888
RefSeq Size:	1799
RefSeq ORF:	933
Synonyms:	bHLHb11; FCHL; FCHL1; HYPLIP1; MLTF; MLTFI; UEF
Locus ID:	7391



[View online »](#)

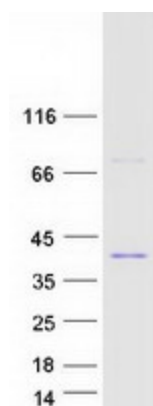
UniProt ID: [P22415](#)

Cytogenetics: 1q23.3

Summary: This gene encodes a member of the basic helix-loop-helix leucine zipper family, and can function as a cellular transcription factor. The encoded protein can activate transcription through pyrimidine-rich initiator (Inr) elements and E-box motifs. This gene has been linked to familial combined hyperlipidemia (FCHL). Alternative splicing of this gene results in multiple transcript variants. A related pseudogene has been defined on chromosome 21. [provided by RefSeq, Feb 2013]

Protein Families: Druggable Genome, Transcription Factors

Product images:



Coomassie blue staining of purified USF1 protein (Cat# [TP319106]). The protein was produced from HEK293T cells transfected with USF1 cDNA clone (Cat# [RC219106]) using MegaTran 2.0 (Cat# [TT210002]).