

Product datasheet for PH319097

EFCAB4B (CRACR2A) (NM_032680) Human Mass Spec Standard

Product data:

Product Type:	Mass Spec Standards
Description:	EFCAB4B MS Standard C13 and N15-labeled recombinant protein (NP_116069)
Species:	Human
Expression Host:	HEK293
Expression cDNA Clone or AA Sequence:	RC219097
Predicted MW:	45.4 kDa
Protein Sequence:	>RC219097 representing NM_032680 Red =Cloning site Green =Tags(s)

MAAPDGRVSRPQRLGQSGQGPKGSGACLHPLDSLEQKETQEQTSGQLVMLRKAQEFFQTCD AEGKGF I
 ARKDMQRLHKELPLSLEELDVFDALDADGNGYLTPQEFTTGFSHFFSQNNPSQEDAGEQVAQRHEEKV
 YLSRGDEDLGDMGEDEEAQFRMLMDRLGAQKVLEDESVDKQLWLQLKKEEPHLLSNFEDFLTRIISQLQE
 AHEEKNELECALKRKIAAYDEEIQHLYEEMEQQIKSEKEQFLKDKTERFQARSQELEQKLLCKEQELEQL
 TQKQKRLEGQCTALHHDKHETKAENTKLKLTNQELARELERTSWELQDAQQQLSQQEACKLHQEKEME
 VYRVTESLQREKAGLLKQLDFLCVGGHWPVLRAPPRSLGSEGPV

TRTRPLEQKLISEEDLAANDILDYKDDDDKV

Tag:	C-Myc/DDK
Purity:	> 80% as determined by SDS-PAGE and Coomassie blue staining
Concentration:	>0.05 µg/µL as determined by microplate BCA method
Labeling Method:	Labeled with [U- ¹³ C ₆ , ¹⁵ N ₄]-L-Arginine and [U- ¹³ C ₆ , ¹⁵ N ₂]-L-Lysine
Buffer:	25 mM Tris-HCl, 100 mM glycine, pH 7.3
Storage:	Store at -80°C. Avoid repeated freeze-thaw cycles.
Stability:	Stable for 3 months from receipt of products under proper storage and handling conditions.
RefSeq:	<u>NP_116069</u>
RefSeq Size:	2204
RefSeq ORF:	1185
Synonyms:	EFCAB4B
Locus ID:	84766

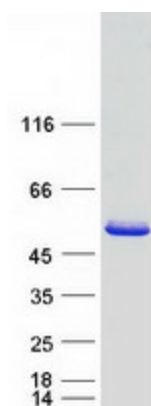

[View online »](#)

UniProt ID: [Q9BSW2](#)

Cytogenetics: 12p13.32

Summary: Ca(2+)-binding protein that plays a key role in store-operated Ca(2+) entry (SOCE) in T-cells by regulating CRAC channel activation. Acts as a cytoplasmic calcium-sensor that facilitates the clustering of ORAI1 and STIM1 at the junctional regions between the plasma membrane and the endoplasmic reticulum upon low Ca(2+) concentration. It thereby regulates CRAC channel activation, including translocation and clustering of ORAI1 and STIM1. Upon increase of cytoplasmic Ca(2+) resulting from opening of CRAC channels, dissociates from ORAI1 and STIM1, thereby destabilizing the ORAI1-STIM1 complex.[UniProtKB/Swiss-Prot Function]

Product images:



Coomassie blue staining of purified CRACR2A protein (Cat# [TP319097]). The protein was produced from HEK293T cells transfected with CRACR2A cDNA clone (Cat# [RC219097]) using MegaTran 2.0 (Cat# [TT210002]).