

Product datasheet for PH319089

JIP2 (MAPK8IP2) (NM_016431) Human Mass Spec Standard

Product data:

Product Type:	Mass Spec Standards
Description:	MAPK8IP2 MS Standard C13 and N15-labeled recombinant protein (NP_057515)
Species:	Human
Expression Host:	HEK293
Expression cDNA Clone or AA Sequence:	RC219089
Predicted MW:	84.5 kDa
Protein Sequence:	>RC219089 representing NM_016431 Red=Cloning site Green=Tags(s)

MLPDFPSPSTWAPGLLLPSGPALLSPSVLQDSLGRSEQHPICSFQDDFQEFEMIDDNEEEDDEEEE
EEEEEGDGEGQEGGDPGEAPAGPLIPSPSVEEPHKHRPTTLRLTTLGAQDSLNNGGFDLVRPASWQ
ETALCSPAPEALRELPGLPATDTGPGGAQSPVRPGDCCEGNRPAEPPAGGTSPSSDPGIEADLRSS
GGRGRRSSQELSSPGDSEDAGGARLGRMISSISETELELSSDGGSSSSGRSSHLTNSIEEASSPASEP
EPPREPPRRPAFLPVGPDDTNSEYESGSESEPDLEADSPWLLSNLVSRMISEGSSPIRCPGQCLSPAP
RPPGEPVSPAGGAAQSDPEAAAGPGGVELVDMETLCAPPPAPAAPRGPAQPGPCLFLSNPTRDIT
PLWAAPGRAARPGRACSAACSEEEDEEEDDEEEDAEDSAGSPGGRGTGPSAPRDASLVYDAVKYTLVVE
HTQLELVSLRRCAGLGHSEEDSGGEASEEEAGAALLGGGQVSGDTPDSDPDLTFSKKFLNVFVNSTRS
SSTESFGLFSCLVNGEEREQTHRAVFRFIPRHPDELELDVDDPVLVEAEEDDFWFRGFNMRTGERGVFPA
FYAHAVGPAKDLLGSKRSPCWVERFDVQFLGSVEVPCHQNGILCAAMQKIATARKLTVHLRPPASCDL
EISLRGVKLSLGGGPEFQRCSHFFQMKNISFCGCHPRNSCYFGFITKHPLLRFACHVVFVSQESMRPVA
QSVGRAFLYYQEHLAYACPTEDIYLE

SGPTRRRLEQKLISEEDLAANDILDYKDDDDKV

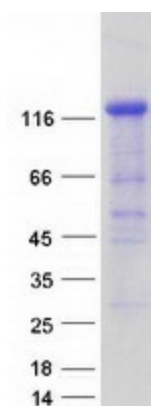
Tag:	C-Myc/DDK
Purity:	> 80% as determined by SDS-PAGE and Coomassie blue staining
Concentration:	>0.05 µg/µL as determined by microplate BCA method
Labeling Method:	Labeled with [U- ¹³ C ₆ , ¹⁵ N ₄]-L-Arginine and [U- ¹³ C ₆ , ¹⁵ N ₂]-L-Lysine
Buffer:	25 mM Tris-HCl, 100 mM glycine, pH 7.3
Storage:	Store at -80°C. Avoid repeated freeze-thaw cycles.
Stability:	Stable for 3 months from receipt of products under proper storage and handling conditions.
RefSeq:	NP_057515



[View online >](#)

RefSeq Size:	3216
RefSeq ORF:	2391
Synonyms:	IB2; JIP2; PRKM8IPL
Locus ID:	23542
UniProt ID:	Q13387
Cytogenetics:	22q13.33
Summary:	This gene encodes a scaffold protein that is thought to be involved in the regulation of the c-Jun amino-terminal kinase signaling pathway. This protein has been shown to interact with and regulate the activity of MAPK8/JNK1 and MAP2K7/MKK7 kinases. [provided by RefSeq, Jun 2017]
Protein Families:	Druggable Genome
Protein Pathways:	MAPK signaling pathway

Product images:



Coomassie blue staining of purified MAPK8IP2 protein (Cat# [TP319089]). The protein was produced from HEK293T cells transfected with MAPK8IP2 cDNA clone (Cat# [RC219089]) using MegaTran 2.0 (Cat# [TT210002]).