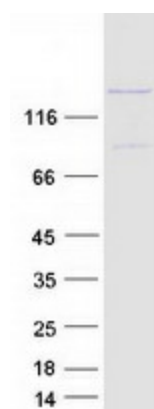




Buffer:	25 mM Tris-HCl, 100 mM glycine, pH 7.3
Storage:	Store at -80°C. Avoid repeated freeze-thaw cycles.
Stability:	Stable for 3 months from receipt of products under proper storage and handling conditions.
RefSeq:	<a href="#">NP_001036199</a>
RefSeq Size:	4544
RefSeq ORF:	3699
Synonyms:	SEC24
Locus ID:	10427
UniProt ID:	<a href="#">O95487</a>
Cytogenetics:	4q25
Summary:	The protein encoded by this gene is a member of the SEC24 subfamily of the SEC23/SEC24 family, which is involved in vesicle trafficking. The encoded protein is thought to be a cargo-binding component of the COPII vesicle, and is thought to be involved in the transport of secretory proteins from the endoplasmic reticulum to the Golgi apparatus. Mutations in this gene have been associated with neural tube defects, and are thought to be a result of a disruption in interactions with the protein encoded by the VANGL planar cell polarity protein 2 (VANGL2) gene. Alternative splicing results in multiple transcript variants encoding different isoforms. [provided by RefSeq, Dec 2015]

### Product images:



Coomassie blue staining of purified SEC24B protein (Cat# [TP319074]). The protein was produced from HEK293T cells transfected with SEC24B cDNA clone (Cat# [RC219074]) using MegaTran 2.0 (Cat# [TT210002]).