

## Product datasheet for PH319060

### MADCAM1 (NM\_130760) Human Mass Spec Standard

#### Product data:

Product Type:	Mass Spec Standards
Description:	MADCAM1 MS Standard C13 and N15-labeled recombinant protein (NP_570116)
Species:	Human
Expression Host:	HEK293
Expression cDNA Clone or AA Sequence:	RC219060
Predicted MW:	38.3 kDa
Protein Sequence:	>RC219060 representing NM_130760 Red=Cloning site Green=Tags(s)  MDFGLALLLAGLLGLLLQSLQVKPLQVEPPEPVVAVALGASRQLTCRLACADRGASVQWRGLDTSLGAV QSDTGRSVLTVRNASLSAAGTRVCVSGCGRTFQHTVQLLVYAFDPQLTVSPAALVPGDPEVACTAHKVT PVDPNALSFSLLVGGQELEGAQALGPEVQEEEEEPQGDEDVLFVTERWRLPPLGTPVPPALYCQATMRL PGLELSHRQAIIPVLHSPTSPEPPNNTSPEPPNNTSPEPDTTSPPEPDTTSPEPPDKTSPEPAPQQGSTH TPRSPGSTRTRRPEISQAGPTQGEVIPTGSSKPAQDQLPAALWTSSAVLGLLLLALPTYHLWKRCRHLAE DDTHPPASLRLLPQVSAWAGLRGTGQVGI SPS  TRTRPLEQKLI SEEDLAANDILDYKDDDDKV
Tag:	C-Myc/DDK
Purity:	> 80% as determined by SDS-PAGE and Coomassie blue staining
Concentration:	>0.05 µg/µL as determined by microplate BCA method
Labeling Method:	Labeled with [U- <sup>13</sup> C <sub>6</sub> , <sup>15</sup> N <sub>4</sub> ]-L-Arginine and [U- <sup>13</sup> C <sub>6</sub> , <sup>15</sup> N <sub>2</sub> ]-L-Lysine
Buffer:	25 mM Tris-HCl, 100 mM glycine, pH 7.3
Storage:	Store at -80°C. Avoid repeated freeze-thaw cycles.
Stability:	Stable for 3 months from receipt of products under proper storage and handling conditions.
RefSeq:	<a href="#">NP_570116</a>
RefSeq Size:	1546
RefSeq ORF:	1146
Synonyms:	MACAM1
Locus ID:	8174



[View online »](#)

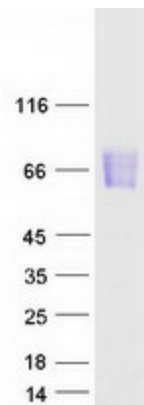
UniProt ID: [Q13477](#)

Cytogenetics: 19p13.3

**Summary:** The protein encoded by this gene is an endothelial cell adhesion molecule that interacts preferentially with the leukocyte beta7 integrin LPAM-1 (alpha4beta7), L-selectin, and VLA-4 (alpha4beta1) on myeloid cells to direct leukocytes into mucosal and inflamed tissues. It is a member of the immunoglobulin family and is similar to ICAM1 and VCAM1. At least seven alternatively spliced transcripts encoding different protein isoforms have been found for this gene, but the full-length nature of some variants has not been determined. [provided by RefSeq, Jul 2008]

**Protein Pathways:** Cell adhesion molecules (CAMs)

### Product images:



Coomassie blue staining of purified MADCAM1 protein (Cat# [TP319060]). The protein was produced from HEK293T cells transfected with MADCAM1 cDNA clone (Cat# [RC219060]) using MegaTran 2.0 (Cat# [TT210002]).