

Product datasheet for PH319050

GSDMA (NM_178171) Human Mass Spec Standard

Product data:

Product Type:	Mass Spec Standards
Description:	GSDMA MS Standard C13 and N15-labeled recombinant protein (NP_835465)
Species:	Human
Expression Host:	HEK293
Expression cDNA Clone or AA Sequence:	RC219050
Predicted MW:	49.4 kDa
Protein Sequence:	>RC219050 protein sequence Red=Cloning site Green=Tags(s)

MTMFENVTRALARQLNPRGDLTPLDSLIDFKRFHPFCLVLRKRKSTLFWGARYVRTDYTLLDVLEPGSSP
SDPTDTGNFGFKNMLDTRVEGDVDVPKTVKVKGTAGLSQNSTLEVQTL SVAPKALET LQERKLAADHPFL
KEMQDQGENLYVMEVVETVQEVT LERAGKAEACFSLPFFAPLGLQGSINHK EAVTI PKGCVLAFRVRQL
MYK GKDEWDIPHICNDNMQT FPPG EKSGEEKVILIQASDVGDVHEGFRTLKEEVQRETQQVEKLSRVGQS
SLLSSLKLLGKKELQDLELALLEGALDKGHEVNLEALPKDVLLSKEAVGAILYFVGALTELSEAQQKLL
VKSMEKKILPVQLKLVESTMEQNFLLDKEGVFPLQPELLSSLGDEELTLTEALVGLSGLEVQRSGPQYMW
DPDTLPRLCALYAGLSLLQLTKAS

TRTRPLEQKLI SEEDLAANDILDYKDDDDKV

Tag:	C-Myc/DDK
Purity:	> 80% as determined by SDS-PAGE and Coomassie blue staining
Concentration:	>0.05 µg/µL as determined by microplate BCA method
Labeling Method:	Labeled with [U- ¹³ C ₆ , ¹⁵ N ₄]-L-Arginine and [U- ¹³ C ₆ , ¹⁵ N ₂]-L-Lysine
Buffer:	25 mM Tris-HCl, 100 mM glycine, pH 7.3
Storage:	Store at -80°C. Avoid repeated freeze-thaw cycles.
Stability:	Stable for 3 months from receipt of products under proper storage and handling conditions.
RefSeq:	<u>NP_835465</u>
RefSeq Size:	2164
RefSeq ORF:	1335
Synonyms:	FKSG9; GSDM; GSDM1



[View online »](#)

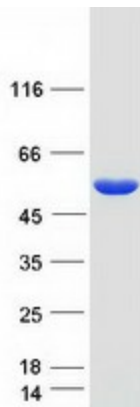
Locus ID: 284110

UniProt ID: [Q96QA5](#)

Cytogenetics: 17q21.1

Summary: May promote pyroptosis (Probable). Upon cleavage in vitro of genetically engineered GSDMA, the released N-terminal moiety binds to some types of lipids, such as possibly phosphatidylinositol (4,5)-bisphosphate. Homooligomerizes within the membrane and forms pores of 10 -15 nanometers (nm) of inner diameter, triggering cell death. Also binds to bacterial and mitochondrial lipids, including cardiolipin, and exhibits bactericidal activity (PubMed:27281216). The physiological relevance of these observations is unknown (Probable).[UniProtKB/Swiss-Prot Function]

Product images:



Coomassie blue staining of purified GSDMA protein (Cat# [TP319050]). The protein was produced from HEK293T cells transfected with GSDMA cDNA clone (Cat# [RC219050]) using MegaTran 2.0 (Cat# [TT210002]).