

Product datasheet for PH319035

Clathrin light chain (CLTA) (NM_007096) Human Mass Spec Standard

Product data:

Product Type:	Mass Spec Standards
Description:	CLTA MS Standard C13 and N15-labeled recombinant protein (NP_009027)
Species:	Human
Expression Host:	HEK293
Expression cDNA Clone or AA Sequence:	RC219035
Predicted MW:	26.9 kDa
Protein Sequence:	>RC219035 representing NM_007096 Red=Cloning site Green=Tags(s) MAELDPFGAPAGAPGGPALGNGVAGAGEEDPAAAFLAQQESEIAGIENDEAFAILDGGAPGPQPHGEP GPDVDGVMNGEYYQESNGPTDSYAAISQVDRLQSEPE SIRKWREEQMERLEALDANSRKQEA EWKEKAI KELEEWYARQDEQLQKTKANNRVADEAFYKQPFADVIGYVTNINHPCYSLEQAAEEAFVNDIDESSPGTE WERVARL CDFNPKSSKQAKDVSRMRSVLISL KQAPLVH TRTRPLEQKLI SEEDLAANDILDYKDDDDKV
Tag:	C-Myc/DDK
Purity:	> 80% as determined by SDS-PAGE and Coomassie blue staining
Concentration:	>0.05 µg/µL as determined by microplate BCA method
Labeling Method:	Labeled with [U- ¹³ C ₆ , ¹⁵ N ₄]-L-Arginine and [U- ¹³ C ₆ , ¹⁵ N ₂]-L-Lysine
Buffer:	25 mM Tris-HCl, 100 mM glycine, pH 7.3
Storage:	Store at -80°C. Avoid repeated freeze-thaw cycles.
Stability:	Stable for 3 months from receipt of products under proper storage and handling conditions.
RefSeq:	NP_009027
RefSeq Size:	1105
RefSeq ORF:	744
Synonyms:	LCA
Locus ID:	1211
UniProt ID:	P09496



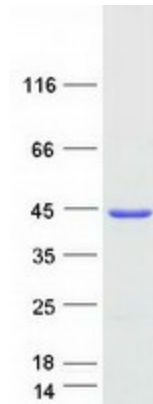
[View online »](#)

Cytogenetics: 9p13.3

Summary: Clathrin is a large, soluble protein composed of heavy and light chains. It functions as the main structural component of the lattice-type cytoplasmic face of coated pits and vesicles which entrap specific macromolecules during receptor-mediated endocytosis. This gene encodes one of two clathrin light chain proteins which are believed to function as regulatory elements. Alternative splicing results in multiple transcript variants. Related pseudogenes have been identified on chromosomes 8 and 12. [provided by RefSeq, May 2010]

Protein Pathways: Endocytosis, Huntington's disease, Lysosome

Product images:



Coomassie blue staining of purified CLTA protein (Cat# [TP319035]). The protein was produced from HEK293T cells transfected with CLTA cDNA clone (Cat# [RC219035]) using MegaTran 2.0 (Cat# [TT210002]).