

## Product datasheet for PH318963

### C1S (NM\_001734) Human Mass Spec Standard

#### Product data:

Product Type:	Mass Spec Standards
Description:	C1S MS Standard C13 and N15-labeled recombinant protein (NP_001725)
Species:	Human
Expression Host:	HEK293
Expression cDNA Clone or AA Sequence:	RC218963
Predicted MW:	76.68 kDa
Protein Sequence:	>RC218963 representing NM_001734 Red=Cloning site Green=Tags(s)

MWCIVLFSLLAWVYAEPMTYGEILSPNYQAYPSEVEKSWDIEVPEGYGIHLYFTHLDIELSENCAYDSV  
QIISGDTEEGRLCGQRSSNPHSPIVEEFQVPYNKLQVIFKSDFSNEERFTGFAAYVATDINECTDFVD  
VPCSHFCNNFIGGYFCSCPPEYFLHDDMKNCGVNCSGDVFTALIGEIASPNYPKYPENSRCYQIRLEK  
GFQVVVTLRREDFDVEAADSAGNCLDSL VFVAGDRQFGPYCGHGFPGPLNIETKSALDIIFQDTLGTQK  
KGWKLRYHGDPMPCKEDTPNSVWEPAAKAKYVFRDVVQITCLDGFVVEGRVGFATSFYSTCQSNKWSNS  
KLKQCPVDCGIPESIEGKVEDPESTLFGSVIRYTCPEPYMENGSGGGEYHCAGNSWVNEVLGPELPK  
CVPVCGVPREPFEEKQRIIGGSDADIKNFPWQVFFDNPWAGGALINEYWVLTAAHVVEGNREPTMYVGST  
SVQTSRLAKSKMLTPEHVF IHPGWKLEVPEGRTNFDNDIALVRLKDPVKMGPTVSPICLPGTSSDYNLM  
DGDGLISGWGRTEKRDRAVRLKAARLPVAPLRKCKEVKVEKPTADAEAYVFTPNMICAGGKGMDSCKG  
DSGGAFVQDPNDKTKFYAAGLVSWGPQCPTYGLYTRVKNYVDWIMKTMQENSTPRED

TRTRPLEQKLI SEEDLAANDILDYKDDDDKV

Tag:	C-Myc/DDK
Purity:	> 80% as determined by SDS-PAGE and Coomassie blue staining
Concentration:	>0.05 µg/µL as determined by microplate BCA method
Labeling Method:	Labeled with [U- 13C6, 15N4]-L-Arginine and [U- 13C6, 15N2]-L-Lysine
Buffer:	25 mM Tris-HCl, 100 mM glycine, pH 7.3
Storage:	Store at -80°C. Avoid repeated freeze-thaw cycles.
Stability:	Stable for 3 months from receipt of products under proper storage and handling conditions.
RefSeq:	<u><a href="#">NP_001725</a></u>
RefSeq Size:	2714



[View online »](#)

RefSeq ORF: 2064

Synonyms: EDSPD2

Locus ID: 716

UniProt ID: [P09871](#)

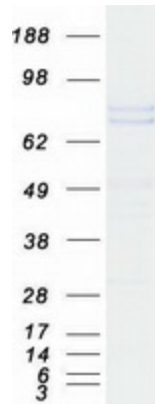
Cytogenetics: 12p13.31

**Summary:** This gene encodes a serine protease, which is a major constituent of the human complement subcomponent C1. C1s associates with two other complement components C1r and C1q in order to yield the first component of the serum complement system. Defects in this gene are the cause of selective C1s deficiency. [provided by RefSeq, Mar 2009]

**Protein Families:** Druggable Genome, Protease

**Protein Pathways:** Complement and coagulation cascades, Systemic lupus erythematosus

### Product images:



Coomassie blue staining of purified C1S protein (Cat# [TP318963]). The protein was produced from HEK293T cells transfected with C1S cDNA clone (Cat# [RC218963]) using MegaTran 2.0 (Cat# [TT210002]).