

## Product datasheet for PH318949

### DOC2B (NM\_003585) Human Mass Spec Standard

#### Product data:

Product Type:	Mass Spec Standards
Description:	DOC2B MS Standard C13 and N15-labeled recombinant protein (NP_003576)
Species:	Human
Expression Host:	HEK293
Expression cDNA Clone or AA Sequence:	RC218949
Predicted MW:	45.8 kDa
Protein Sequence:	>RC218949 representing NM_003585 Red=Cloning site Green=Tags(s)

MTLRRRGEKATISIQEHMAIDVCPGPIRPIKQISDYFPRFPRGLPPDAGPRAAAPDAPARPAVAGARR  
SPSDGAREDDVDQLFGAYSSPGSPGPSPARPPAKPPEDEPDADGYESDDCTALGTLDFSLLYDQEN  
NALHCTITKAKGLKPMDHNLADPYVKLHLLPGASKANKLRKTLRNTLNPTWNETLTYGITDEDMIRK  
TLRISVCEDEKFRHNEFIGETRVPLKCLKPNHTKTFISICLEKQLPVDKTEDKSLEERGRILISLKYSSQK  
QGLLVGIVRCAHLAAMDANGYSDPYVKTYLRPDVDKSKHKTAVKKKTLPNPEFNEEFCYEIKHGDLAKKS  
LEVTWVDYDIGKSNDFIGGVVLGIHAKGERLKHWFDCLEKNDKRIERWHTLTSELPGAVLSD

TRTRPLEQKLISEEDLAANDILDYKDDDDKV

Tag:	C-Myc/DDK
Purity:	> 80% as determined by SDS-PAGE and Coomassie blue staining
Concentration:	>0.05 µg/µL as determined by microplate BCA method
Labeling Method:	Labeled with [U- <sup>13</sup> C <sub>6</sub> , <sup>15</sup> N <sub>4</sub> ]-L-Arginine and [U- <sup>13</sup> C <sub>6</sub> , <sup>15</sup> N <sub>2</sub> ]-L-Lysine
Buffer:	25 mM Tris-HCl, 100 mM glycine, pH 7.3
Storage:	Store at -80°C. Avoid repeated freeze-thaw cycles.
Stability:	Stable for 3 months from receipt of products under proper storage and handling conditions.
RefSeq:	<a href="#">NP_003576</a>
RefSeq Size:	2030
RefSeq ORF:	1236
Synonyms:	DOC2BL
Locus ID:	8447



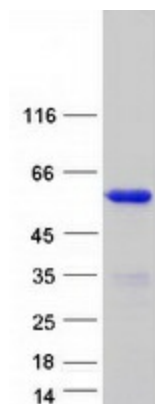
[View online »](#)

UniProt ID: [Q14184](#)

Cytogenetics: 17p13.3

**Summary:** There are at least two protein isoforms of the Double C2 protein, namely alpha (DOC2A) and beta (DOC2B), which contain two C2-like domains. DOC2A and DOC2B are encoded by different genes; these genes are at times confused with the unrelated DAB2 gene which was initially named DOC-2. DOC2B is expressed ubiquitously and is suggested to be involved in Ca<sup>2+</sup>-dependent intracellular vesicle trafficking in various types of cells. [provided by RefSeq, Jul 2008]

### Product images:



Coomassie blue staining of purified DOC2B protein (Cat# [TP318949]). The protein was produced from HEK293T cells transfected with DOC2B cDNA clone (Cat# [RC218949]) using MegaTran 2.0 (Cat# [TT210002]).