

Product datasheet for PH318938

PSMF1 (NM_006814) Human Mass Spec Standard

Product data:

Product Type:	Mass Spec Standards
Description:	PSMF1 MS Standard C13 and N15-labeled recombinant protein (NP_006805)
Species:	Human
Expression Host:	HEK293
Expression cDNA Clone or AA Sequence:	RC218938
Predicted MW:	29.6 kDa
Protein Sequence:	>RC218938 representing NM_006814 Red=Cloning site Green=Tags(s) MAGLEVLFAAIPAITCRQDALVCFHWEVVTGTYFGLGVGDQPGPNDKSELLPAGWNNKDLVLRYE YKDGSRKLLVKAITVESSMILNVLEYGQQVADLTNLDDYIDAEHLGDFHRTYKNSEELRSRIVSGIIT PIHEQWEKANVSSPHREFPPATAREVDPLRIPRHPHTSRQPPWCDPLGPFVVGEDLDPFGPRRGGMIV DPLRSGFPRALIDPSSGLPNRLPPGAVPPGARFDPFPGPIGTSPGPNPDHLPPIGGYDDMYL TRTRPLEQKLI SEEDLAANDILDYKDDDDKV
Tag:	C-Myc/DDK
Purity:	> 80% as determined by SDS-PAGE and Coomassie blue staining
Concentration:	>0.05 µg/µL as determined by microplate BCA method
Labeling Method:	Labeled with [U- ¹³ C ₆ , ¹⁵ N ₄]-L-Arginine and [U- ¹³ C ₆ , ¹⁵ N ₂]-L-Lysine
Buffer:	25 mM Tris-HCl, 100 mM glycine, pH 7.3
Storage:	Store at -80°C. Avoid repeated freeze-thaw cycles.
Stability:	Stable for 3 months from receipt of products under proper storage and handling conditions.
RefSeq:	NP_006805
RefSeq Size:	3241
RefSeq ORF:	813
Synonyms:	PI31
Locus ID:	9491
UniProt ID:	Q92530 , A0A140VJT2



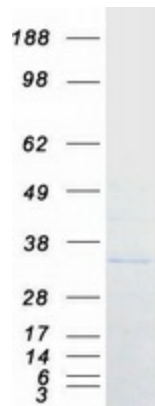
[View online »](#)

Cytogenetics: 20p13

Summary: The 26S proteasome is a multicatalytic proteinase complex with a highly ordered structure composed of 2 complexes, a 20S core and a 19S regulator. The 20S core is composed of 4 rings of 28 non-identical subunits; 2 rings are composed of 7 alpha subunits and 2 rings are composed of 7 beta subunits. The 19S regulator is composed of a base, which contains 6 ATPase subunits and 2 non-ATPase subunits, and a lid, which contains up to 10 non-ATPase subunits. Proteasomes are distributed throughout eukaryotic cells at a high concentration and cleave peptides in an ATP/ubiquitin-dependent process in a non-lysosomal pathway. An essential function of a modified proteasome, the immunoproteasome, is the processing of class I MHC peptides. This gene encodes a protein that inhibits the activation of the proteasome by the 11S and 19S regulators. Alternative transcript variants have been identified for this gene. [provided by RefSeq, Jul 2008]

Protein Pathways: Proteasome

Product images:



Coomassie blue staining of purified PSMF1 protein (Cat# [TP318938]). The protein was produced from HEK293T cells transfected with PSMF1 cDNA clone (Cat# [RC218938]) using MegaTran 2.0 (Cat# [TT210002]).