

Product datasheet for PH318936

ITGA8 (NM_003638) Human Mass Spec Standard

Product data:

Product Type:	Mass Spec Standards
Description:	ITGA8 MS Standard C13 and N15-labeled recombinant protein (NP_003629)
Species:	Human
Expression Host:	HEK293
Expression cDNA Clone or AA Sequence:	RC218936
Predicted MW:	117.3 kDa
Protein Sequence:	>RC218936 representing NM_003638 Red=Cloning site Green=Tags(s)

MSPGASRGRGSAQPLIAPLCCAAAALGMLLWSPACQAFNLDVEKLTVYSGPKGSYFGYAVDFHIDPRT
ASVLVAGPKANTSQPDIVEGGAVYCPWPAEGSAQCRQIPFDTTNNRKIRVNGTKPEIEFKSNQWFGATV
KAHKGKVVACAPLYHWRTLKPTPEKDPVGTCTYVAIQNFSAYAEFSPCRNSNADPEGQGYCQAGFSLDFYK
NGDLIVGGPGSFYWQQVITASVADIIANYSFKDILRKLAGEKQTEVAPASYDSDSYLGYSVAAGEFTGDS
QQELVAGIPRGAQNFQVYSIINSTDMTFIQNFTGEQMASYFGYTVVSDVNSDGLDDVLVGAFLMERE
ESNPREVQGIYLYLVSSLLFRDPQILTGTETFRFGSAMAHLGDLNQGNDYNDIAIGVPFAGKDQRGKVL
IYNGNKDGLNTPSQVLQGVWASHAVPSGFGFTLRGSDSDIKNDYDPLIVGAFGTGKVAVYRARPVTV
AQLLLHPMIINLENKTCQVPDSMTSAACFSLRVCASVTGQSIANTIVLMAEVQLDSLKQKGAIKRTLFLD
NHQAHRVFPLVIKRQKSHQCQDFIVYLRDETEFRDKLSPINISLNYSLDESTFKEGLEVKPILNYYRENI
VSEQAHLVDCGEDNLCVPLKLSARPDKHQVIGDENHMLIINARNEGEGAYEAEFVMIPEEADYVG
IERNNKGRFPLSCEYKMENVTRMVVCDLGNPMVSGTNYSLGLRFVAVRLEKTNMSINFDLQIRSSNKDNP
DSNFVSLQINITAVAQVEIRGVSHPPQIVLPIHNWEPEEEPHKEEEVGPLVEHIYELHNIIPSTISDTIL
EVGWPFSAARDEFLLYIFHIQTLGPLQCQPNPNINPQDIKPAASPEDTPELSAFLRNSTIPHLVRKRVDVH
VEFHRQSPAKILNCTNIECLQISCAVGRLEGGESAVLKVRSRLWAHTFLQRKNDPYALASLVSFEVKKMP
YTDQPAKLPEGSIAIKTSVIWATPNVFSIPLWVILAILLGLLVAILTLALWCKGFFDRARPPQEDMT
DREQLTNDKTPEA

TRTRPLEQKLISEEDLAANDILDYKDDDDKV

Tag:	C-Myc/DDK
Purity:	> 80% as determined by SDS-PAGE and Coomassie blue staining
Concentration:	>0.05 µg/µL as determined by microplate BCA method
Labeling Method:	Labeled with [U- ¹³ C ₆ , ¹⁵ N ₄]-L-Arginine and [U- ¹³ C ₆ , ¹⁵ N ₂]-L-Lysine
Buffer:	25 mM Tris-HCl, 100 mM glycine, pH 7.3



[View online »](#)

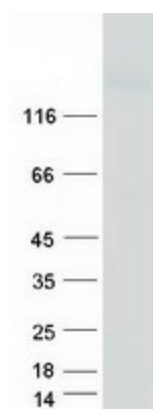
Storage:	Store at -80°C. Avoid repeated freeze-thaw cycles.
Stability:	Stable for 3 months from receipt of products under proper storage and handling conditions.
RefSeq:	NP_003629
RefSeq Size:	3261
RefSeq ORF:	3189
Locus ID:	8516
UniProt ID:	P53708 , B4DN28
Cytogenetics:	10p13

Summary: Integrins are heterodimeric transmembrane receptor proteins that mediate numerous cellular processes including cell adhesion, cytoskeletal rearrangement, and activation of cell signaling pathways. Integrins are composed of alpha and beta subunits. This gene encodes the alpha 8 subunit of the heterodimeric integrin alpha8beta1 protein. The encoded protein is a single-pass type 1 membrane protein that contains multiple FG-GAP repeats. This repeat is predicted to fold into a beta propeller structure. This gene regulates the recruitment of mesenchymal cells into epithelial structures, mediates cell-cell interactions, and regulates neurite outgrowth of sensory and motor neurons. The integrin alpha8beta1 protein thus plays an important role in wound-healing and organogenesis. Mutations in this gene have been associated with renal hypodysplasia/aplasia-1 (RHDA1) and with several animal models of chronic kidney disease. Alternate splicing results in multiple transcript variants encoding distinct isoforms. [provided by RefSeq, Apr 2014]

Protein Families: Druggable Genome, Transmembrane

Protein Pathways: Arrhythmogenic right ventricular cardiomyopathy (ARVC), Cell adhesion molecules (CAMs), Dilated cardiomyopathy, ECM-receptor interaction, Focal adhesion, Hypertrophic cardiomyopathy (HCM), Regulation of actin cytoskeleton

Product images:



Coomassie blue staining of purified ITGA8 protein (Cat# [TP318936]). The protein was produced from HEK293T cells transfected with ITGA8 cDNA clone (Cat# [RC218936]) using MegaTran 2.0 (Cat# [TT210002]).