

Product datasheet for PH318930

C16orf89 (NM_152459) Human Mass Spec Standard

Product data:

Product Type:	Mass Spec Standards
Description:	C16orf89 MS Standard C13 and N15-labeled recombinant protein (NP_689672)
Species:	Human
Expression Host:	HEK293
Expression cDNA Clone or AA Sequence:	RC218930
Predicted MW:	49.2 kDa
Protein Sequence:	>RC218930 representing NM_152459 Red=Cloning site Green=Tags(s) MASLGLLLLLLLLTALPPLWSSSLPGLDTAASKATIADLILSALERATVFLEQRLPEINLDGMVGVRVLEE QLKSVREKWAQEPLLQPLSLRVGMLGEKLEAAIQRSLSHYLKLSDPKYLREFQLTLQPGFWKLPHAWIHTD ASLVYPTFGPQDSFSEERSDVCLVQLLGTGDSSEPCGLSDLCRSLMTKPGCSGYCLSHQLLFFLWARMR GCTQGPLQQSQDYINLFCANMMDLNRRAEAIQYAYPTRDIFMENIMFCGMGGFSDFYKLRWLEAILSWQK QQEGCFGEPDAEDEELSKAIQYQQHF SRRVKRREKQFPDSRSVAQAGVQWRNLGSLQPLPPGFKQFSCLI LPSSWDYRSVPPYLANFYIFLVETGFHHVAHAGLELLISRDPPTSGSQSVGL TRTRPLEQKLI SEEDLAANDILDYKDDDDKV
Tag:	C-Myc/DDK
Purity:	> 80% as determined by SDS-PAGE and Coomassie blue staining
Concentration:	>0.05 µg/µL as determined by microplate BCA method
Labeling Method:	Labeled with [U- ¹³ C ₆ , ¹⁵ N ₄]-L-Arginine and [U- ¹³ C ₆ , ¹⁵ N ₂]-L-Lysine
Buffer:	25 mM Tris-HCl, 100 mM glycine, pH 7.3
Storage:	Store at -80°C. Avoid repeated freeze-thaw cycles.
Stability:	Stable for 3 months from receipt of products under proper storage and handling conditions.
RefSeq:	NP_689672
RefSeq Size:	1898
RefSeq ORF:	1206
Locus ID:	146556
UniProt ID:	Q6UX73

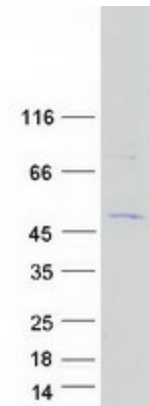


[View online »](#)

Cytogenetics: 16p13.3

Summary: This gene is expressed predominantly in the thyroid. Based on expression patterns similar to thyroid transcription factors and proteins, this gene may function in the development and function of the thyroid. Multiple transcript variants encoding different isoforms have been found for this gene. [provided by RefSeq, Oct 2011]

Product images:



Coomassie blue staining of purified C16orf89 protein (Cat# [TP318930]). The protein was produced from HEK293T cells transfected with C16orf89 cDNA clone (Cat# [RC218930]) using MegaTran 2.0 (Cat# [TT210002]).