

## Product datasheet for PH318925

### MAGI3 (NM\_152900) Human Mass Spec Standard

#### Product data:

|                                       |   |
|---------------------------------------|---|
| Product Type:                         | Mass Spec Standards   |
| Description:                          | MAGI3 MS Standard C13 and N15-labeled recombinant protein (NP_690864) |
| Species:                              | Human   |
| Expression Host:                      | HEK293  |
| Expression cDNA Clone or AA Sequence: | RC218925  |
| Predicted MW:                         | 123.3 kDa   |
| Protein Sequence:                     | >RC218925 protein sequence<br>Red=Cloning site Green=Tags(s)          |

MSKTLKKKKHWL SKVQEC AVSWAGPPGDFGAEIRGGAERGFEPYLGR LREEPGGGTCCVVS GKAPSPGDV  
LLEVNGTPV SGLTNRDTLAVIRHFREPIRLKTVKPGKVINKDLRHYLSLQFQKGSIDHKLQQVIRDNL  
YLRITPCTTRAPRDGEVPGVDYNFISVEQFKALEESGALLES GTYDGNFYGTPKPPAEPSPFPDPVDQVLF  
DNEFDAESQRKRTTSVSKMERMDS SLP EEEEEDEK EAINSGNAENRERHSESSDWMKTVPSYNQTNSSM  
DFRNYMMRDETLEPLPKNWEMAYTDTGMIYFIDHNTKTTTWLDPRLCKKAKAPEDCEDGELPYGWEKIED  
PQYGTYYVDHLNQKTQFENPVVEEAKRKKQLGQVEIGSSKPDMEKSHFTRDPSQLKGVLRASLKKSTMGF  
GFTIIGGDRPDEF LQVKNVLKDGPA AQDGKIAPGDVIVDINGNCVLGH THADVVMFQLVPVNQYVNLTL  
CRGYLPDDSED PVVDIVAATPVINGQSLTKGETCMNPQDFKPGAMVLEQNGKSGHTLTGDGLNGPSDAS  
EQRVSMASSGSSQPELVTIPLIKGPKGFFAIADSP TGQVKMILDSQWCQGLQKGDIIKEIYHQNVQNL  
THLQVVEVLKQFPVGADVPLLILRGGPPSPTKTAKMKTDKKNAGSLEAINEPIQPMPFPSPSIIRSGSP  
KLDPSEVYLKSKTLYEDKPPNTKDLDFLRLKQESGFGFRVLGGDGPDQSIYIGAIPLGAAEKDGR LRAA  
DELMCIDGIPVKGKSHKQVLDLMTTAARNGHVLLTVRRKIFYGEEKQPEDDSSQAFISTQNGSPRLNRAEV  
PARPAPQEPYDVVLQRKENEGFGFVILTSKNKPPPGVIPHKIGRVI EGSPADRCGLKVG DHI SAVNGQS  
IVELSHDNIVQLIKDAGVTVTLTVIAEEHHGPPSGTNSARQSPALQHRPMGQSQANHIPGDRSALEGEI  
GKDVSTSYRHSWSDHKHLAQPD TAVISVVGSRHNQNLGCYPVELERGRGFGFSLRGGKEYNMGLFILRL  
AEDGPAIKDGRIHVGDQIVEINGEPTQGI THTRAIELIQAGGNKVL LLLRP GTGLIPDHGLAPSGLSYV  
KPEQH

TRTRPLEQKLISEEDLAANDILDYKDDDDKV

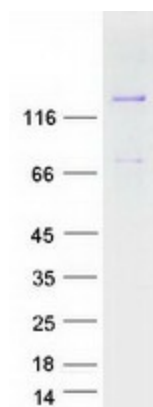
|                  |  |
|------------------|--|
| Tag:             | C-Myc/DDK  |
| Purity:          | > 80% as determined by SDS-PAGE and Coomassie blue staining  |
| Concentration:   | >0.05 µg/µL as determined by microplate BCA method   |
| Labeling Method: | Labeled with [U- <sup>13</sup> C <sub>6</sub> , <sup>15</sup> N <sub>4</sub> ]-L-Arginine and [U- <sup>13</sup> C <sub>6</sub> , <sup>15</sup> N <sub>2</sub> ]-L-Lysine |
| Buffer:          | 25 mM Tris-HCl, 100 mM glycine, pH 7.3   |



[View online »](#)

|                   |   |
|-------------------|---|
| Storage:          | Store at -80°C. Avoid repeated freeze-thaw cycles.  |
| Stability:        | Stable for 3 months from receipt of products under proper storage and handling conditions.  |
| RefSeq:           | <a href="#">NP_690864</a>   |
| RefSeq Size:      | 7221  |
| RefSeq ORF:       | 3375  |
| Synonyms:         | dj730K3.2; MAGI-3   |
| Locus ID:         | 260425  |
| UniProt ID:       | <a href="#">Q5TCQ9</a>  |
| Cytogenetics:     | 1p13.2  |
| Summary:          | Acts as a scaffolding protein at cell-cell junctions, thereby regulating various cellular and signaling processes. Cooperates with PTEN to modulate the kinase activity of AKT1. Its interaction with PTPRB and tyrosine phosphorylated proteins suggests that it may link receptor tyrosine phosphatase with its substrates at the plasma membrane. In polarized epithelial cells, involved in efficient trafficking of TGFA to the cell surface. Regulates the ability of LPAR2 to activate ERK and RhoA pathways. Regulates the JNK signaling cascade via its interaction with FZD4 and VANGL2.[UniProtKB/Swiss-Prot Function] |
| Protein Families: | Druggable Genome  |
| Protein Pathways: | Tight junction  |

### Product images:



Coomassie blue staining of purified MAGI3 protein (Cat# [TP318925]). The protein was produced from HEK293T cells transfected with MAGI3 cDNA clone (Cat# [RC218925]) using MegaTran 2.0 (Cat# [TT210002]).