

## Product datasheet for PH318918

### LRP6 (NM\_002336) Human Mass Spec Standard

#### Product data:

Product Type:	Mass Spec Standards
Description:	LRP6 MS Standard C13 and N15-labeled recombinant protein (NP_002327)
Species:	Human
Expression Host:	HEK293
Expression cDNA Clone or AA Sequence:	RC218918
Predicted MW:	180.44 kDa
Protein Sequence:	>RC218918 representing NM_002336 Red=Cloning site Green=Tags(s)

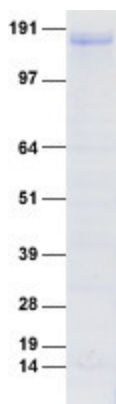
MGAVLRSLACSFVLLRAAPLLLYANRRDLRLVDATNGKENATIVVGGLEDAAAVDFVFSHGLIYWSDV  
SEEAIKRTFNFKTESVQNVVVSGLLSPDGLACDWLGEKLYWTDSETNRIEVSNDGSLRKVLFWQELDQP  
RAIALDPSSGFMYWTDWGEVPKIERAGMDGSSRFIIINSEIYWPNGLTLDYEEQKLYWADAKLNF IHKSN  
LDGTNRQAVVKGSLPHFPALTLFEDILYWDWSTHSILACNKYTGEGLREIHSDFSPMDIHAFSQQRQP  
NATNPGCIDNGGCSHLCLMSPVKPFYQCACPTGVKLENGKTCCKDGATELLLLARRTDLRRLSLDTPDFT  
DIVLQLEDIRHAIADYDPVEGYIYWTDDVRAIRRSFIDGSGSQFVVTAQIAHPDGIADVWVARNLYWT  
DTGTDRIEVRTLNKTRKILISEDLEEPRAIVLDPVMGYMYWTDWGEIPKIERAALDGSDRVLLVNTSLG  
WPNGLALDYDEGKIYWGDAKTDKIEVMNTDGTGRRVLVEDKIPHIFGFTLLGDYVYWTDWQRRSIEVHK  
RSAEREVIIDQLPDLMLKATNVHRVIGSNPCAENGCSHLCLYRPPQLRCACPIGFELISDMKTCIVP  
EAFLLFSRRADIRRISLETNNNNVAIPLTGVEASALDFDVTNRIYWTDISLKTISRPFMNGSALEHV  
EFGLDYPEGMAVDWLGNLYWADTGTNRIEVSCLDGQHRQVLVWKDLDSPRALALDPAEGFMYWTEWGGK  
PKIDRAAMDGSERTTLVNVGRANGLTIDYAKRRLYWTDLDTNLIESSNMLGLNREVIADDLPHPFGLTQ  
YQDYIYWTDWSRRSIERANKTSGQNRITIQGHLDYVMDILVFHSSRQSGWNECASSNGHCSHLCLAVPVG  
GFVCGCPAHYSLNADNRTCASPTTFLFSQKSAINRMVIDEQQSPDIILPIHSLRNVAIDYDPLDKQLY  
WIDSRQNMIRKAQEDGSQGFVVVSSVPSQNLIEQPYDLSDIYSRYIYWTCEATNVINVTRLDRSVGV  
VLKGEQDRPRAIVVNPEKGYMYFTNLQERSPKIERAALDGTEREVLFVSGLSKPIALALDSRLKGLFWAD  
SDLRRIESSDLSGANRIVLEDSNLLQPVGLTVFENWLYWIDKQQMIIEKIDMTGREGRTKVQARIAQLSD  
IHAVKELNLQEYRQHPCAQDNGGCSHICLVKGDGTTTRCSCPMHLVLLQDELSCGEPPTCSPQFTCTGE  
IDCIPVAWRCDGFTECEDHSDENPCVCSSESQFCASGQCIDGALRCNGDANCQDKSDEKNCEVLCIDQ  
FRCANGQCIGKHKKCDHNVDCSDKSDLEDCYPTTEEPAPQATNTVGSVIGVIVTIFVSGTVYFICQRMCP  
RMKGDGETMTNDYVVHGPASVPLGYVPHPSLGSGLPGMSRGKSMISLIMGGSSGPPYDRAHVTGASS  
SSSSSTKGTYPAILNPPSPATERSHYTMEFGYSSNSPSTHRSYSYRPSYRHFAPPTTPCSTDVCDSD  
YAPSRRTSVATAKGYTDLNVDSEVPPPPPTPRSQYLSAEENYESCPPSPYTERSYSHLYPPPPSPCT  
DSS

TRTRPLEQKLI SEEDLAANDILDYKDDDDKV



[View online »](#)

<b>Tag:</b>	C-Myc/DDK
<b>Purity:</b>	> 80% as determined by SDS-PAGE and Coomassie blue staining
<b>Concentration:</b>	>0.05 µg/µL as determined by microplate BCA method
<b>Labeling Method:</b>	Labeled with [U- <sup>13</sup> C <sub>6</sub> , <sup>15</sup> N <sub>4</sub> ]-L-Arginine and [U- <sup>13</sup> C <sub>6</sub> , <sup>15</sup> N <sub>2</sub> ]-L-Lysine
<b>Buffer:</b>	25 mM Tris-HCl, 100 mM glycine, pH 7.3
<b>Storage:</b>	Store at -80°C. Avoid repeated freeze-thaw cycles.
<b>Stability:</b>	Stable for 3 months from receipt of products under proper storage and handling conditions.
<b>RefSeq:</b>	<a href="#">NP_002327</a>
<b>RefSeq Size:</b>	5301
<b>RefSeq ORF:</b>	4839
<b>Synonyms:</b>	ADCAD2; STHAG7
<b>Locus ID:</b>	4040
<b>UniProt ID:</b>	<a href="#">O75581</a>
<b>Cytogenetics:</b>	12p13.2
<b>Summary:</b>	<p>This gene encodes a member of the low density lipoprotein (LDL) receptor gene family. LDL receptors are transmembrane cell surface proteins involved in receptor-mediated endocytosis of lipoprotein and protein ligands. The protein encoded by this gene functions as a receptor or, with Frizzled, a co-receptor for Wnt and thereby transmits the canonical Wnt/beta-catenin signaling cascade. Through its interaction with the Wnt/beta-catenin signaling cascade this gene plays a role in the regulation of cell differentiation, proliferation, and migration and the development of many cancer types. This protein undergoes gamma-secretase dependent RIP- (regulated intramembrane proteolysis) processing but the precise locations of the cleavage sites have not been determined.[provided by RefSeq, Dec 2009]</p>
<b>Protein Families:</b>	Druggable Genome, Transmembrane
<b>Protein Pathways:</b>	Wnt signaling pathway

**Product images:**

Coomassie blue staining of purified LRP6 protein (Cat# [TP318918]). The protein was produced from HEK293T cells transfected with LRP6 cDNA clone (Cat# [RC218918]) using MegaTran 2.0 (Cat# [TT210002]).