

## Product datasheet for PH318912

### FAM3C (NM\_001040020) Human Mass Spec Standard

#### Product data:

Product Type:	Mass Spec Standards
Description:	FAM3C MS Standard C13 and N15-labeled recombinant protein (NP_001035109)
Species:	Human
Expression Host:	HEK293
Expression cDNA Clone or AA Sequence:	RC218912
Predicted MW:	24.7 kDa
Protein Sequence:	>RC218912 protein sequence <b>Red</b> =Cloning site <b>Green</b> =Tags(s)  MRVAGAAKLVVAVAVFLLTFYVISQVFEIKMDASLGRLFARSALDTAARSTKPPRYKCGISKACPEKHFA FKMASGAANVVGPKICLEDNVLMSGVKNNVGRGINVALANGKTGEVLDTKYFDMWGGDVAPFIEFLKAIQ DGTIVLMGTYYDDGATKLNDEARRLIADLGSTISITNLGFRDNWVFCGGKGIKTKSPFEQHIKNNKDTNKYE GWPEVVEMEGCIIPQKQD  <b>TRTRPLEQKLISEEDLAANDILDYKDDDDKV</b>
Tag:	C-Myc/DDK
Purity:	> 80% as determined by SDS-PAGE and Coomassie blue staining
Concentration:	>0.05 µg/µL as determined by microplate BCA method
Labeling Method:	Labeled with [U- <sup>13</sup> C <sub>6</sub> , <sup>15</sup> N <sub>4</sub> ]-L-Arginine and [U- <sup>13</sup> C <sub>6</sub> , <sup>15</sup> N <sub>2</sub> ]-L-Lysine
Buffer:	25 mM Tris-HCl, 100 mM glycine, pH 7.3
Storage:	Store at -80°C. Avoid repeated freeze-thaw cycles.
Stability:	Stable for 3 months from receipt of products under proper storage and handling conditions.
RefSeq:	<a href="#">NP_001035109</a>
RefSeq Size:	2512
RefSeq ORF:	681
Synonyms:	GS3786; ILEI
Locus ID:	10447
UniProt ID:	<a href="#">Q92520</a>



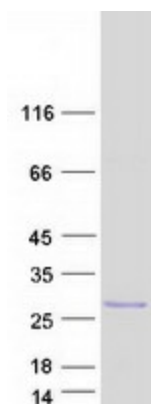
[View online »](#)

Cytogenetics: 7q31.31

**Summary:** This gene is a member of the family with sequence similarity 3 (FAM3) family and encodes a secreted protein with a GG domain. A change in expression of this protein has been noted in pancreatic cancer-derived cells. [provided by RefSeq, Mar 2010]

**Protein Families:** Secreted Protein, Transmembrane

**Product images:**



Coomassie blue staining of purified FAM3C protein (Cat# [TP318912]). The protein was produced from HEK293T cells transfected with FAM3C cDNA clone (Cat# [RC218912]) using MegaTran 2.0 (Cat# [TT210002]).