

## Product datasheet for PH318869

### ASTE1 (NM\_014065) Human Mass Spec Standard

#### Product data:

Product Type:	Mass Spec Standards
Description:	ASTE1 MS Standard C13 and N15-labeled recombinant protein (NP_054784)
Species:	Human
Expression Host:	HEK293
Expression cDNA Clone or AA Sequence:	RC218869
Predicted MW:	77.1 kDa
Protein Sequence:	>RC218869 protein sequence Red=Cloning site Green=Tags(s)

MGIRGLMSFVEDHSNEFFTDLKL RDTKIVIDGYALFHRLCFSSNLDLRYGGDYDSFADVQKFFESLFAC  
NICPYVVL DGGCDISDKKLTTLKDRAREKIQMAHSL SVGGSGYVCP LLIREVFIQVLIKLRVCFVQCFSE  
ADRDIMTLANHWNC PVLSSDSDFCIFDLKTGF CPLNSFQWRNMNTIKGTQNYIPAKCFSLDAFCHHFSNM  
NKALLPLFAVLCGNDHVNLPIMETFLSKARLPLGATSSKGRHHRILGLLNWL SHFANPTEALDNVLKYL  
PKKDRENVKELLCCSMEEYQQSQVKLQDF FQCGTYVCPDALNLGLPEWLVVALAKGQLSPFISDALVLR  
TILPTQVENMQQPNAHRISQPIRQIIYGLLLNASPHLDKTSWNALPPQPLAFSEVERINKNIRTSIIDAV  
ELAKDHSDL SRLTELSLRRRQMLLLET LKVKQTILEPIPTSLKLP IAVSCYWLQHTETKAKLHHLQSLLL  
TMLVGPLIAIINSPGKEELQEDGAKMLYAEFQRVKAQTRLGTRLDLDTAHIFCQWQSCLQMGMYLNQLLS  
TPLPEPDLTRLYSGSLVHGLCQQLLASTSVESLLSICPEAKQLYEYLFNATRSYAPAEIFLPKGRSNSKK  
KRQKKQNTSCSKNRGRTTAHTKCWYEGNNRFGLLMVENLEEHSEASNIE

TRTRPLEQKLI SEEDLAANDILDYKDDDDKV

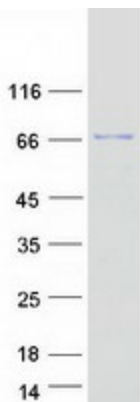
Tag:	C-Myc/DDK
Purity:	> 80% as determined by SDS-PAGE and Coomassie blue staining
Concentration:	>0.05 µg/µL as determined by microplate BCA method
Labeling Method:	Labeled with [U- 13C6, 15N4]-L-Arginine and [U- 13C6, 15N2]-L-Lysine
Buffer:	25 mM Tris-HCl, 100 mM glycine, pH 7.3
Storage:	Store at -80°C. Avoid repeated freeze-thaw cycles.
Stability:	Stable for 3 months from receipt of products under proper storage and handling conditions.
RefSeq:	<a href="#">NP_054784</a>
RefSeq Size:	2736



[View online »](#)

RefSeq ORF:	2037
Synonyms:	HT001
Locus ID:	28990
UniProt ID:	<a href="#">Q2TB18</a>
Cytogenetics:	3q22.1
Summary:	Possible role in EGF receptor signaling.[UniProtKB/Swiss-Prot Function]

### Product images:



Coomassie blue staining of purified ASTE1 protein (Cat# [TP318869]). The protein was produced from HEK293T cells transfected with ASTE1 cDNA clone (Cat# [RC218869]) using MegaTran 2.0 (Cat# [TT210002]).