

## Product datasheet for PH318864

### LRP5 (NM\_002335) Human Mass Spec Standard

#### Product data:

Product Type:	Mass Spec Standards
Description:	LRP5 MS Standard C13 and N15-labeled recombinant protein (NP_002326)
Species:	Human
Expression Host:	HEK293
Expression cDNA Clone or AA Sequence:	RC218864
Predicted MW:	179 kDa
Protein Sequence:	>RC218864 representing NM_002335 Red=Cloning site Green=Tags(s)

```

MEAAPGPPWPLLLLLLLLLLALCGCPAPAAASPLLLFANRRDVRVLDAGGVKLESTIVVSGLEDAAAVDF
QFSKGAVYWTDVSEEAIKQTYLNQTAGAAVQNVVISGLVSPDGLACDWVGKLYWTDSETRNIEVANLNGT
SRKVLFWQDLDPRAIALDPAHGYMYWTDWGETPRIERAGMDGSTRKIIIVSDIYWPNGLTIDLEEKLY
WADAKLSFIHRANLDGSFRQKVEGSLTHPFALTLSGDTLYWTDWQTRSIHACNKRTGGKRKEILSALYS
PMDIQVLSQERQPFHTRCEDNGGCSHLCLLSPSEPFYTCACPTGVQLQDNGRTCKAGAEVLLLRART
DLRRISLDTPDFTDIVLQVDDIRHAIADYDPLEGYVYWTDDEVRAIRRAYLDGSGAQTLVNTEINPDG
IAVDWVARNLWYTDGTDRIEVTRLNGTSRKILVSEDLDEPRAIALHPVMGLMYWTDWGENPKIECANLD
GQERRVLVNASLWPNGLALDLQEGKLYWGDADTKIEVINVDGTRRRTLLEDKLPHFIFGFTLLGDFIYW
TDWQRRSIERVHKVKASRDVIIDQLPDLMLKAVNVAKVVGTPNPNPCADRNGGCSHLCTFTPHATRCGCPIG
LELLSDMKTCIVPEAFLVFTSRAAIHRISETNNDVAIPLTGKVEASALDFDVSNNHIYWTDVSLKTI
SAFAMNGSSVEHVVEFGLDYPEGMAVDWGMKNLYWADTGTNRIEVARLDGQFRQVLVWRDLNPRSLALDP
TKGYIYWTEWGGKPRIVRAFMDGTNCMTLVDKVGRANDLTIDYADQRLYWTDLDTNMISSNMLGQERVV
IADDLPHPFGLTQYSDIYWTDWNLHSIERADKTSGRNRTL IQGHLDFVMDILVFHSSRQDGLNDCMHN
GQCGQLCLAI PGGHRGCGASHYTLDPSSRNCSPPTFFLLFSQKSAISRMIPDDQHSPDLILPLHGLRNVK
AIDYDPLDKFIYWVDGRQNIKRAKDDGTQPFVLTSLSQGNPDRQPHDLSDIYSRTLFWTCEATNTINV
HRLSGEAMGVVLRGDRDKPRAIVVNAERGYLYFTNMQDRAAKIERAALDGTEREVLTFTGLIRPVALVVD
NTLGKLFWVDADLKRIESCDSLGSANRLTLEDANIVQPLGLTILGKHL YWIDRQQMIERVEKTTGDKRTR
IQGRVAHLTGIHAVEEVSL EEFSAHPCARDNGGCSHICIAKGDGTPRCSCP VHLVLLQNLITCGEPPTCS
PDQFACATGEIDCIPGAWRCDGFPECDQSDDEEGCPVCSAAQFPCARGQCVDLRLRCDGEADCQDRSDEV
DCDAICLQNFRCASGQCVLIKQCCDFPDCIDGSDLMCEITKPPSDDSPAHSSAIGPVIIGIILSLFVM
GGVYFVCQRVVCQRYAGANGPFPHEVYVSGTPHVPLNFIAPGGSQHGPFPTGIACGKSMSSVSLMGGRRGV
PLYDRNHVTGASSSSSSSTKATLYPPIINPPSPATDPSLYNMDMFYSSNIPATARPYRPIIRGMAPPT
TPCSTDVCDSDYASRWKASKYYLDLNSDSDPYPPPTPHSQYLSAEDSCPPSPATERSYFHLFPPPPSP
CTDSS

```

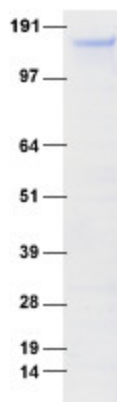
TRTRPLEQKLI SEEDLAANDILDYKDDDDKV



[View online >](#)

Tag:	C-Myc/DDK
Purity:	> 80% as determined by SDS-PAGE and Coomassie blue staining
Concentration:	>0.05 µg/µL as determined by microplate BCA method
Labeling Method:	Labeled with [U- <sup>13</sup> C <sub>6</sub> , <sup>15</sup> N <sub>4</sub> ]-L-Arginine and [U- <sup>13</sup> C <sub>6</sub> , <sup>15</sup> N <sub>2</sub> ]-L-Lysine
Buffer:	25 mM Tris-HCl, 100 mM glycine, pH 7.3
Storage:	Store at -80°C. Avoid repeated freeze-thaw cycles.
Stability:	Stable for 3 months from receipt of products under proper storage and handling conditions.
RefSeq:	<a href="#">NP_002326</a>
RefSeq Size:	5100
RefSeq ORF:	4845
Synonyms:	BMND1; EVR1; EVR4; HBM; LR3; LRP-5; LRP-7; LRP7; OPPG; OPS; OPTA1; PCLD4; VBCH2
Locus ID:	4041
UniProt ID:	<a href="#">O75197</a>
Cytogenetics:	11q13.2
Summary:	This gene encodes a transmembrane low-density lipoprotein receptor that binds and internalizes ligands in the process of receptor-mediated endocytosis. This protein also acts as a co-receptor with Frizzled protein family members for transducing signals by Wnt proteins and was originally cloned on the basis of its association with type 1 diabetes mellitus in humans. This protein plays a key role in skeletal homeostasis and many bone density related diseases are caused by mutations in this gene. Mutations in this gene also cause familial exudative vitreoretinopathy. Alternative splicing results in multiple transcript variants. [provided by RefSeq, May 2014]
Protein Families:	Druggable Genome, Transmembrane
Protein Pathways:	Wnt signaling pathway

### Product images:



Coomassie blue staining of purified LRP5 protein (Cat# [TP318864]). The protein was produced from HEK293T cells transfected with LRP5 cDNA clone (Cat# [RC218864]) using MegaTran 2.0 (Cat# [TT210002]).