

## Product datasheet for PH318842

### Eg5 (KIF11) (NM\_004523) Human Mass Spec Standard

#### Product data:

Product Type:	Mass Spec Standards
Description:	KIF11 MS Standard C13 and N15-labeled recombinant protein (NP_004514)
Species:	Human
Expression Host:	HEK293
Expression cDNA Clone or AA Sequence:	RC218842
Predicted MW:	119 kDa
Protein Sequence:	>RC218842 representing NM_004523 Red=Cloning site Green=Tags(s)

MASQPNSSAKKKEEKGNIQVVVRCRPFNLAERKASAHSEIVECDPVRKEVSVRTGGLADKSSRKYTFDM  
VFGASTKQIDVYRSVVCPIILDEIVMGYNCTIFAYGQTGTGKTFMEGERSPNEEYTWEEDPLAGIIPRTL  
HQIFEKLTONGTEFSVKVSLLEIYNEELFDLLNPSSDVSERLQMFDDPRNKRGVIIKGLEEITVHNKDEV  
YQILEKGAARKRTAATLMNAYSSRSVSVTIHMKETTIDGEEELVKIGKLNLDLAGSENIGRSGAVDK  
RAREAGNIQSLLTLGRVITALVERTPHVPYRESKLTRILQDSLGGRTSIIATISPASLNLEETLSTL  
EYAHRAKNILNKPEVNQKLTKKALIKYEETIEERLKRDLAAAREKNGVYI SEENFRVMSGKLTVQEEQIV  
ELIEKIGAVEEELNRVTELFMDNKNELDQCKSDLQNKQTQELLETTQKHLQETKLQLVKEEYITSALESTEE  
KLHDAASKLLNTVEETTKDVSGLSKLDKRAVDQHNAEQDIFGKNLNSLFNNMEELIKDGSQKQKAML  
EVHKTLLFGNLLSSVSALDITTTVALGSLTSIPENVSTHVSQIFNMILKEQSLAAESKTVLQELINVLKT  
DLLSSLEMILSPTVVSILKINSQKHIKFTSLTVADKIEDQKKELDGFLSILCNLHELQENTICSLVES  
QKQCGNLTEDLTIKQTHSQELCKLMNLWTERFCALKEEKENIQKPLSSVQENIQKSKDIVNKMTFHSQ  
KFCADSDGFSQELRNFNQEGTKLVEESVKHSDKLNGLNLEKISQETEQRCELNTRTVYFSEQWVSSLNER  
EQELHNLLEVVSQCCEASSSDITEKSDGRKAAHEKQHNIFLDQMTIDEDKLIQNLELNETIKIGLTKLN  
CFLEQDLKLDIPTGTTTPQRKSYLYPSTLVRTEPREHLLDQLKRRKQPELLMMLNCSENNKEETIPDQVVEE  
AVLGQYTEEPLSQEPSVDAGVDCSSIGGVVFFQHKKSHGKDKENRGINTLERSKVEETTEHLVTKSRLPL  
RAQINL

TRTRPLEQKLISEEDLAANDILDYKDDDDKV

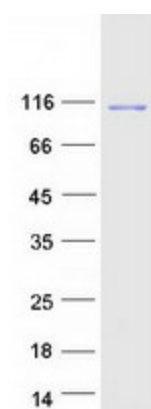
Tag:	C-Myc/DDK
Purity:	> 80% as determined by SDS-PAGE and Coomassie blue staining
Concentration:	>0.05 µg/µL as determined by microplate BCA method
Labeling Method:	Labeled with [U- <sup>13</sup> C <sub>6</sub> , <sup>15</sup> N <sub>4</sub> ]-L-Arginine and [U- <sup>13</sup> C <sub>6</sub> , <sup>15</sup> N <sub>2</sub> ]-L-Lysine
Buffer:	25 mM Tris-HCl, 100 mM glycine, pH 7.3



[View online »](#)

<b>Storage:</b>	Store at -80°C. Avoid repeated freeze-thaw cycles.
<b>Stability:</b>	Stable for 3 months from receipt of products under proper storage and handling conditions.
<b>RefSeq:</b>	<a href="#">NP_004514</a>
<b>RefSeq Size:</b>	4908
<b>RefSeq ORF:</b>	3168
<b>Synonyms:</b>	EG5; HKSP; KNSL1; MCLMR; TRIP5
<b>Locus ID:</b>	3832
<b>UniProt ID:</b>	<a href="#">P52732</a>
<b>Cytogenetics:</b>	10q23.33
<b>Summary:</b>	This gene encodes a motor protein that belongs to the kinesin-like protein family. Members of this protein family are known to be involved in various kinds of spindle dynamics. The function of this gene product includes chromosome positioning, centrosome separation and establishing a bipolar spindle during cell mitosis. [provided by RefSeq, Jul 2008]
<b>Protein Families:</b>	Druggable Genome

### Product images:



Coomassie blue staining of purified KIF11 protein (Cat# [TP318842]). The protein was produced from HEK293T cells transfected with KIF11 cDNA clone (Cat# [RC218842]) using MegaTran 2.0 (Cat# [TT210002]).